

**A729-Test slide, Head and neck cancer tissues
with corresponding normal tissues**

(formalin fixed)

For research use only

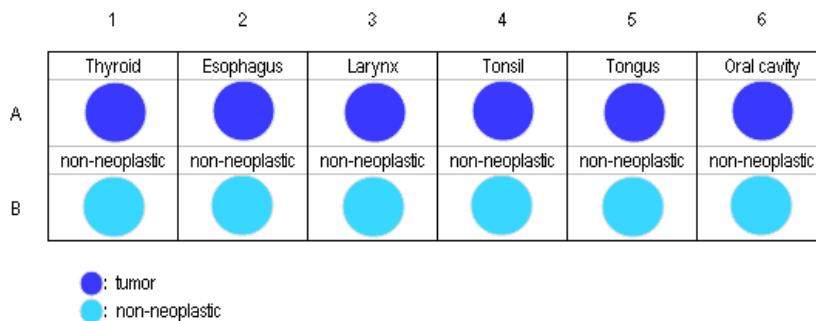
Specifications:

- No. of cases: 6
- Tissue type: Test slide, Head and neck cancer tissues with corresponding normal tissues
- No. of spots: 6 spots from each cancer case (6 spots)
6 non-neoplastic spots (6 spots)
- Total spots: 12
- Corresponding normal tissues with cancers: Yes
- Diameter: 1.0 mm

Documents:

- Product specification: layout, summary of tissue spots
- H&E stained images
- Detailed pathological information

Layout:



**A729-Test slide, Head and neck cancer tissues
with corresponding normal tissues**

(formalin fixed)

For research use only

Summary of tissue spots

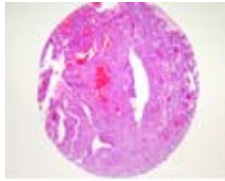
No	Coordinate	Sex	Age	Key word	
1	A	1	f	35	Thyroid gland: papillary carcinoma
2	B	1	f	35	Non-noeplastic from A1
3	A	2	m	67	Esophagus: squamous cell carcinoma
4	B	2	m	67	Non-noeplastic from A2
5	A	3	f	66	Larynx: invasive squamous cell carcinoma
6	B	3	f	66	Non-noeplastic from A3
7	A	4	m	55	Tonsil: squamous cell carcinoma
8	B	4	m	55	Non-noeplastic from A4
9	A	5	m	70	Tongue: squamous cell carcinoma
10	B	5	m	70	Non-noeplastic from A5
11	A	6	m	53	Oral cavity: squamous cell carcinoma
12	B	6	m	53	Non-noeplastic from A6

**A729-Test slide, Head and neck cancer tissues
with corresponding normal tissues**

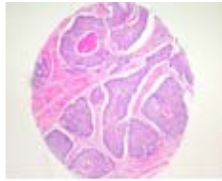
(formalin fixed)

For research use only

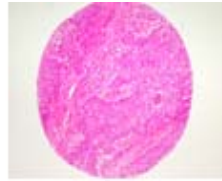
**QC sheet_LOT#132120507081
Hematoxylin and Eosin staining**



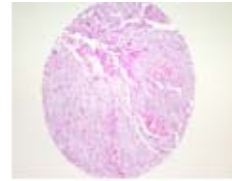
A1



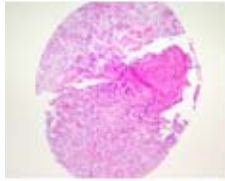
A2



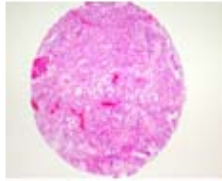
A3



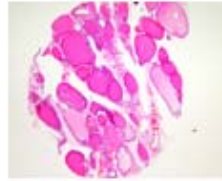
A4



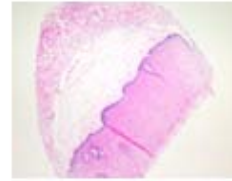
A5



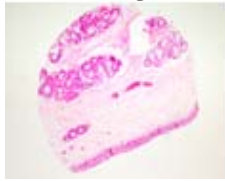
A6



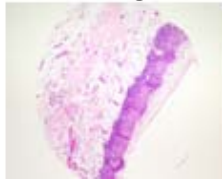
B1



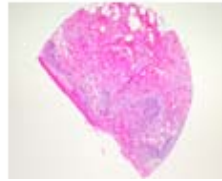
B2



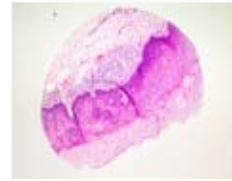
B3



B4



B5



B6

A729: Test slide, Head and neck cancer tissues with corresponding normal tissues

No	Coordinate		Sex	Age	Key word	Histological Diagnosis
1	A	1	f	35	thyroid gland: papillary carcinoma	Thyroid gland, left, thyroidectomy: 1) papillary carcinoma with extension beyond thyroid capsule 2) adenomatous hyperplasia.
2	B	1	f	35	non-noeplastic	non-noeplastic from A1
3	A	2	m	67	esophagus: squamous cell carcinoma	Esophagus, Ivor Lewis operation: squamous cell carcinoma, poorly differentiated 1) ulceroinfiltrative type 2) extending through muscle layer and focally extending to adventitia 3) occasional lymphatic permeation 4) resection margin, proximal: Presence of squamous cell carcinoma in situ within 1mm away from the margin 5) resection margin, distal: free of tumor 6) regional lymph nodes, periesophageal(1/14): tumor metastasis in 1 out of 14 nodes 7) regional lymph nodes, separately submitted, peripancreatic(0/1), common hepatic(0/2), subcarinal(0/5), left paracardial(2/4), celiac(0/4), lesser curvature(0/4): (0/20): Tumor metastasis in 2 out of 20 nodes.
4	B	2	m	67	non-noeplastic	non-noeplastic from A2
5	A	3	f	66	larynx: invasive squamous cell carcinoma	Larynx with lymph nodes, total laryngectomy with bilateral radical neck dissection: invasive squamous cell carcinoma, moderately differentiated, supraglottic, with extension through epiglottic cartilage into the preepiglottic spaces (maximum invasion depth:9mm). 1) resection margin, superior: extension of carcinoma 2) resection margins, inferior, anterior and posterior: free of tumor 3) salivary gland: free from tumor extension 4) regional lymph nodes of neck: metastasis to 2 out of 106 lymph nodes with perinodal soft tissue extension (No.1(0/4), No.2(1/15), No.3(0/8), No.4(0/14), No.5(0/30), No.6 (0/13), No.7(0/11), No.8(1/8), No.9(0/3)) 5) cystic mass, separately submitted: epidermal cyst.
6	B	3	f	66	non-noeplastic	non-noeplastic from A3

A729: Test slide, Head and neck cancer tissues with corresponding normal tissues

No	Coordinate	Sex	Age	Key word	Histological Diagnosis	
7	A	4	m	55	tonsil: squamous cell carcinoma	Tonsil, radical excision: squamous cell carcinoma, poorly differentiated, with 1) surface ulceration 2) size: 3.5x1.8cm 3) expanding growth 4) lymphovascular permeation: negative 5) resection margins, pharynx, upper gingiva, retromolar trigone, tonsil: free of tumor 6) resection margin, base: free of tumor, but nearly attached 7) regional lymph nodes: tumor metastasis to 2 out of 39(2/39), in detail, prevascular(0/0), retrovascular(0/2), preglandular(0/1), retroglandular(0/3), SMG(chronic sialadenitis and its node 0/1), level IIA(1/5), level IIB(1/13), level III(0/10), level IV(0/4).
8	B	4	m	55	non-noeplastic	non-noeplastic from A4
9	A	5	m	70	tongue: squamous cell carcinoma	1. Tongue, excision: 1) poorly differentiated squamous cell carcinoma(size,3.5x1.5cm), see Note 1 2) regional lymph node, left neck, radical neck dissection level I(0/1), level II(1/15), level III(0/28), level IV(0/12), level V(0/6),(1/62), Metastatic squamous cell carcinoma in one out of 62 nodes(size of involved node, 3.5cm), see Note 2 2. Salivary gland, lingual and submandibular: free of tumor 3. Skeletal muscle, sternocleidomastoid: free of tumor 4. Jugular vein: free of tumor Note 1> The tumor involves lateral and basal resection margins. It is 2mm apart from anterior margin and 1cm from posterior margin Note 2> One lymph node contains bland-looking thyroid follicles. Although there are no papillary configuration, nuclear groove and intranuclear inclusion, the possibility of metastatic papillary carcinoma of thyroid is suspected. Investigation of thyroid gland is needed.
10	B	5	m	70	non-noeplastic	non-noeplastic from A5

A729: Test slide, Head and neck cancer tissues with corresponding normal tissues

No	Coordinate		Sex	Age	Key word	Histological Diagnosis
11	A	6	m	53	oral cavity: squamous cell carcinoma	<p>Oral cavity, retromolar trigone, wide excision: squamous cell carcinoma, well differentiated.</p> <p>1) resection margins, labelled as "retromolar margin" and "anterior pillar", "palatine tonsil", "posterior pillar", "tongue base", "soft palate": free of tumor</p> <p>2) resection margin, labelled as "buccal mucosa": involvement of tumor</p> <p>3) specimens, labelled as "marginal mandibulectomy fragment", "mandible body": the additional report will follow after decalcification.</p> <p><Additional report></p> <p>Specimens, labelled as "marginal mandibulectomy fragment", "mandible body": free of tumor.</p>
12	B	6	m	53	non-noeplastic	non-noeplastic from A6