

**A307- Pancreas cancer tissues with
corresponding normal tissues**

(formalin fixed)

For research use only

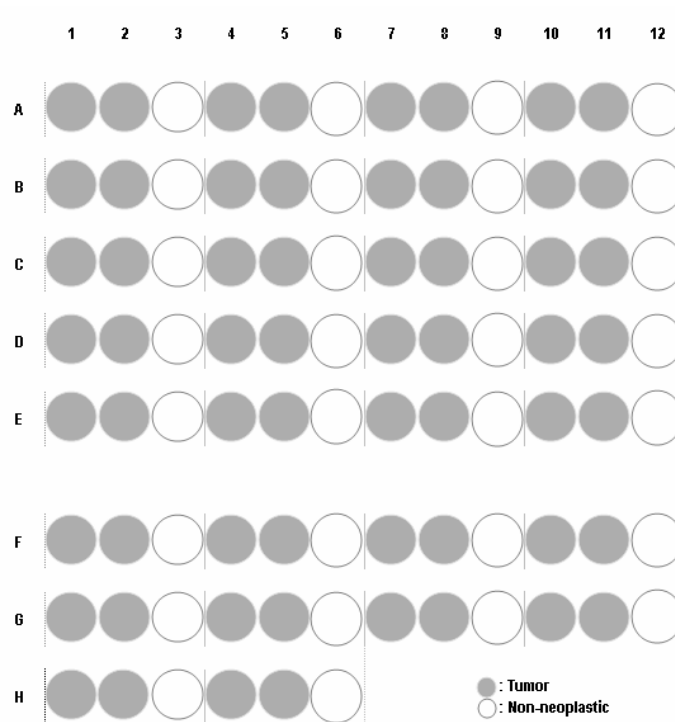
Specifications:

- No. of cases: 30
- Tissue type: Pancreas cancer tissues with corresponding normal tissues
- No. of spots: 2 spots from each cancer case (60 spots)
30 non-neoplastic spots (30 spots)
- Total spots: 90
- Corresponding normal tissues with cancers: Yes
- Diameter: 1.0 mm

Documents:

- Product specification: layout, summary of tissue spots
- H&E stained images
- Detailed pathological information

Layout:



**A307- Pancreas cancer tissues with
corresponding normal tissues**

(formalin fixed)

For research use only

Summary of tissue spots

No	Coordinate	Age	Sex	Histological Diagnosis	Differentiate	Stage	
1	A	1,2	M	63	Adenocarcinoma	Moderate	IIB
2	A	3	M	63	Non-neoplastic	Non-neoplastic from A1,2	
3	A	4,5	M	47	Adenocarcinoma	Moderate	IIB
4	A	6	M	47	Non-neoplastic	Non-neoplastic from A4,5	
5	A	7,8	F	65	Adenocarcinoma	Moderate	IIA
6	A	9	F	65	Non-neoplastic	Non-neoplastic from A7,8	
7	A	10,11	M	65	Adenocarcinoma	Moderate	IIA
8	A	12	M	65	Non-neoplastic	Non-neoplastic from A10,11	
9	B	1,2	M	64	Adenocarcinoma	Moderate	IIB
10	B	3	M	64	Non-neoplastic	Non-neoplastic from B1,2	
11	B	4,5	F	46	Adenocarcinoma	Moderate	III
12	B	6	F	46	Non-neoplastic	Non-neoplastic from B4,5	
13	B	7,8	M	59	Adenocarcinoma	Moderate	IIA
14	B	9	M	59	Non-neoplastic	Non-neoplastic from B7,8	
15	B	10,11	M	64	Adenocarcinoma	Moderate	IIA
16	B	12	M	64	Non-neoplastic	Non-neoplastic from B10,11	
17	C	1,2	M	46	Adenocarcinoma	Moderate	IIA
18	C	3	M	46	Non-neoplastic	Non-neoplastic from C1,2	
19	C	4,5	M	62	Adenocarcinoma	Moderate	IIB
20	C	6	M	62	Non-neoplastic	Non-neoplastic from C4,5	
21	C	7,8	F	66	Adenocarcinoma	Moderate	IIB
22	C	9	F	66	Non-neoplastic	Non-neoplastic from C7,8	
23	C	10,11	M	55	Adenocarcinoma	Moderate	IIB
24	C	12	M	55	Non-neoplastic	Non-neoplastic from C10,11	
25	D	1,2	M	69	Adenocarcinoma	Moderate	IIB
26	D	3	M	69	Non-neoplastic	Non-neoplastic from D1,2	
27	D	4,5	M	53	Adenocarcinoma	Moderate	IIB
28	D	6	M	53	Non-neoplastic	Non-neoplastic from D4,5	
29	D	7,8	F	61	Adenocarcinoma	Moderate	IIB
30	D	9	F	61	Non-neoplastic	non-neoplastic from D7,8	
31	D	10,11	M	42	Adenocarcinoma	Moderate	IIA
32	D	12	M	42	Non-neoplastic	non-neoplastic from D10,11	
33	E	1,2	F	50	Adenocarcinoma	Moderate	IIB
34	E	3	F	50	Non-neoplastic	non-neoplastic from E1,2	
35	E	4,5	M	68	Adenocarcinoma	Moderate	IIB
36	E	6	M	68	Non-neoplastic	non-neoplastic from E4,5	
37	E	7,8	M	71	Adenocarcinoma	Moderate	IIB
38	E	9	M	71	Non-neoplastic	non-neoplastic from E7,8	
39	E	10,11	F	80	Adenocarcinoma	Moderate	IIA
40	E	12	F	80	Non-neoplastic	non-neoplastic from E10,11	

A307- Pancreas cancer tissues with corresponding normal tissues

(formalin fixed)

For research use only

Summary of tissue spots

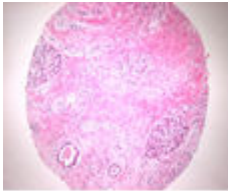
No	Coordinate	Age	Sex	Histological Diagnosis	Differentiate	Stage
41	F 1,2	M 69	69	Adenocarcinoma	Poorly	IIB
42	F 3	M 69	69	Non-neoplastic	non-neoplastic from F1,2	
43	F 4,5	M 55	55	Adenocarcinoma	Poorly	IIA
44	F 6	M 55	55	Non-neoplastic	non-neoplastic from F4,5	
45	F 7,8	F 40	40	Adenocarcinoma	Poorly	III
46	F 9	F 40	40	Non-neoplastic	non-neoplastic from F7,8	
47	F 10,11	F 56	56	Adenocarcinoma	Poorly	IIA
48	F 12	F 56	56	Non-neoplastic	non-neoplastic from F10,11	
49	G 1,2	M 56	56	Adenocarcinoma	Poorly	IIA
50	G 3	M 56	56	Non-neoplastic	non-neoplastic from G1,2	
51	G 4,5	M 69	69	Adenocarcinoma	Poorly	IIB
52	G 6	M 69	69	Non-neoplastic	non-neoplastic from G4,5	
53	G 7,8	M 43	43	Adenocarcinoma	Poorly	IIB
54	G 9	M 43	43	Non-neoplastic	non-neoplastic from G7,8	
55	G 10,11	M 70	70	Adenocarcinoma	Well	IIB
56	G 12	M 70	70	Non-neoplastic	non-neoplastic from G10,11	
57	H 1,2	F 64	64	Adenocarcinoma		IIA
58	H 3	F 64	64	Non-neoplastic	non-neoplastic from H1,2	
59	H 4,5	M 60	60	Anaplastic	Anaplastic	IIB
60	H 6	M 60	60	Non-neoplastic	non-neoplastic from H4,5	

**A307- Pancreas cancer tissues with
corresponding normal tissues**

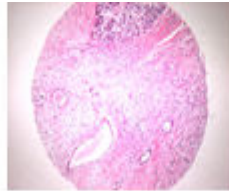
(formalin fixed)

For research use only

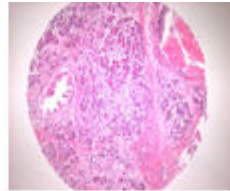
**QC sheet_LOT#132130701131
Hematoxylin and Eosin staining**



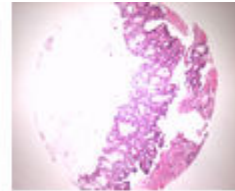
A1



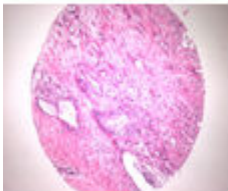
A2



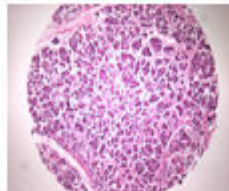
A3



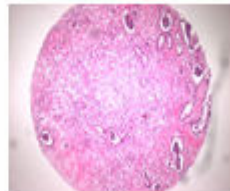
A4



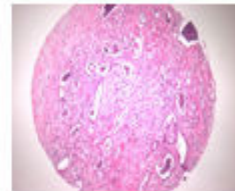
A5



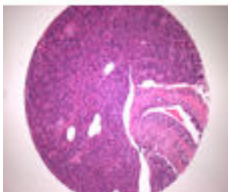
A6



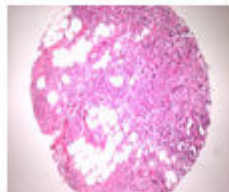
A7



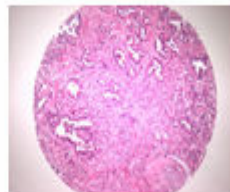
A8



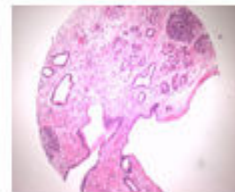
A9



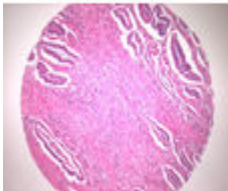
A10



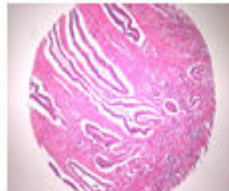
A11



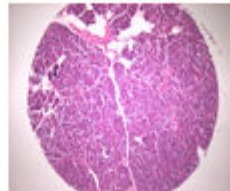
A12



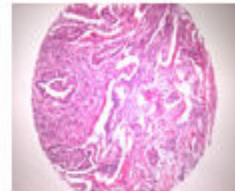
B1



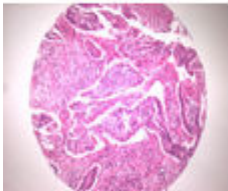
B2



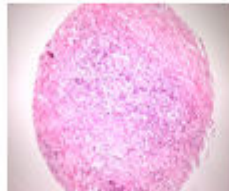
B3



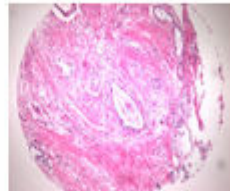
B4



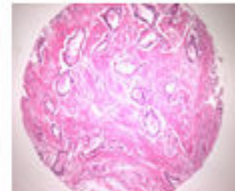
B5



B6



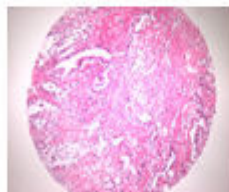
B7



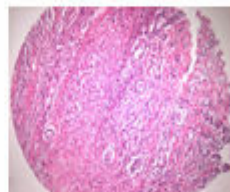
B8



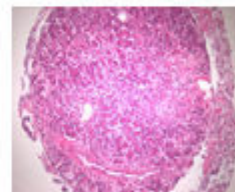
B9



B10



B11



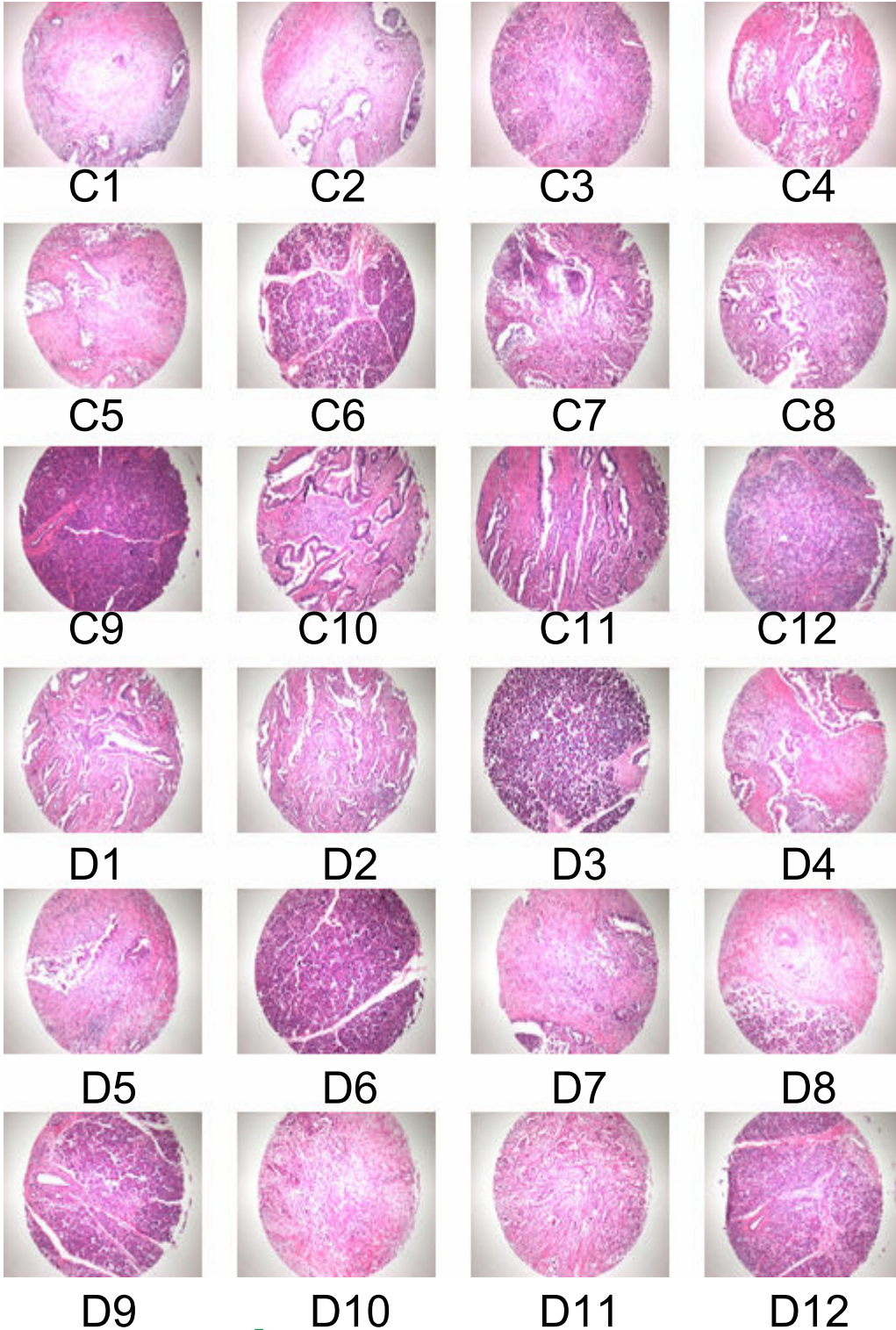
B12

**A307- Pancreas cancer tissues with
corresponding normal tissues**

(formalin fixed)

For research use only

**QC sheet_LOT#132130701131
Hematoxylin and Eosin staining**

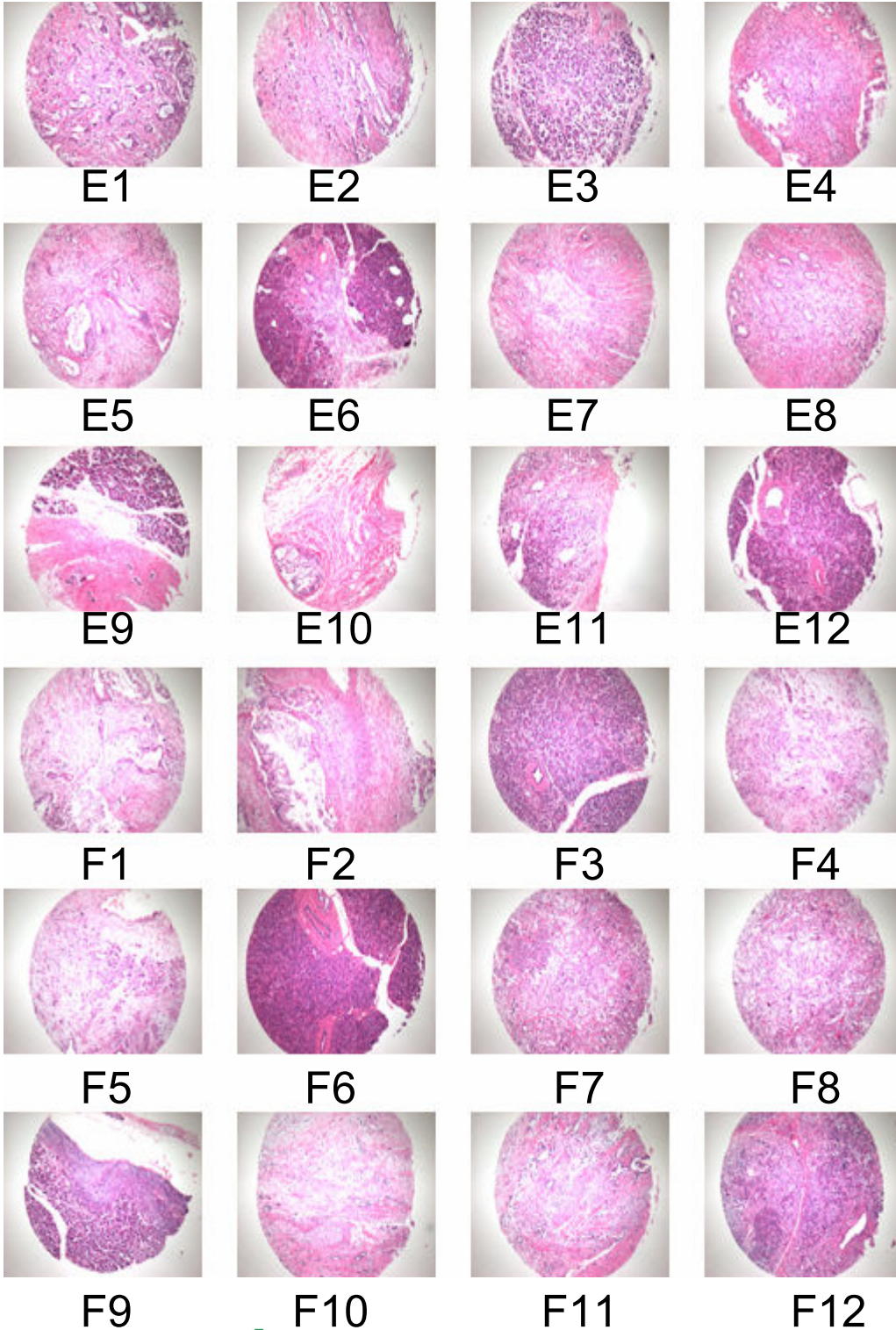


**A307- Pancreas cancer tissues with
corresponding normal tissues**

(formalin fixed)

For research use only

**QC sheet_LOT#132130701131
Hematoxylin and Eosin staining**

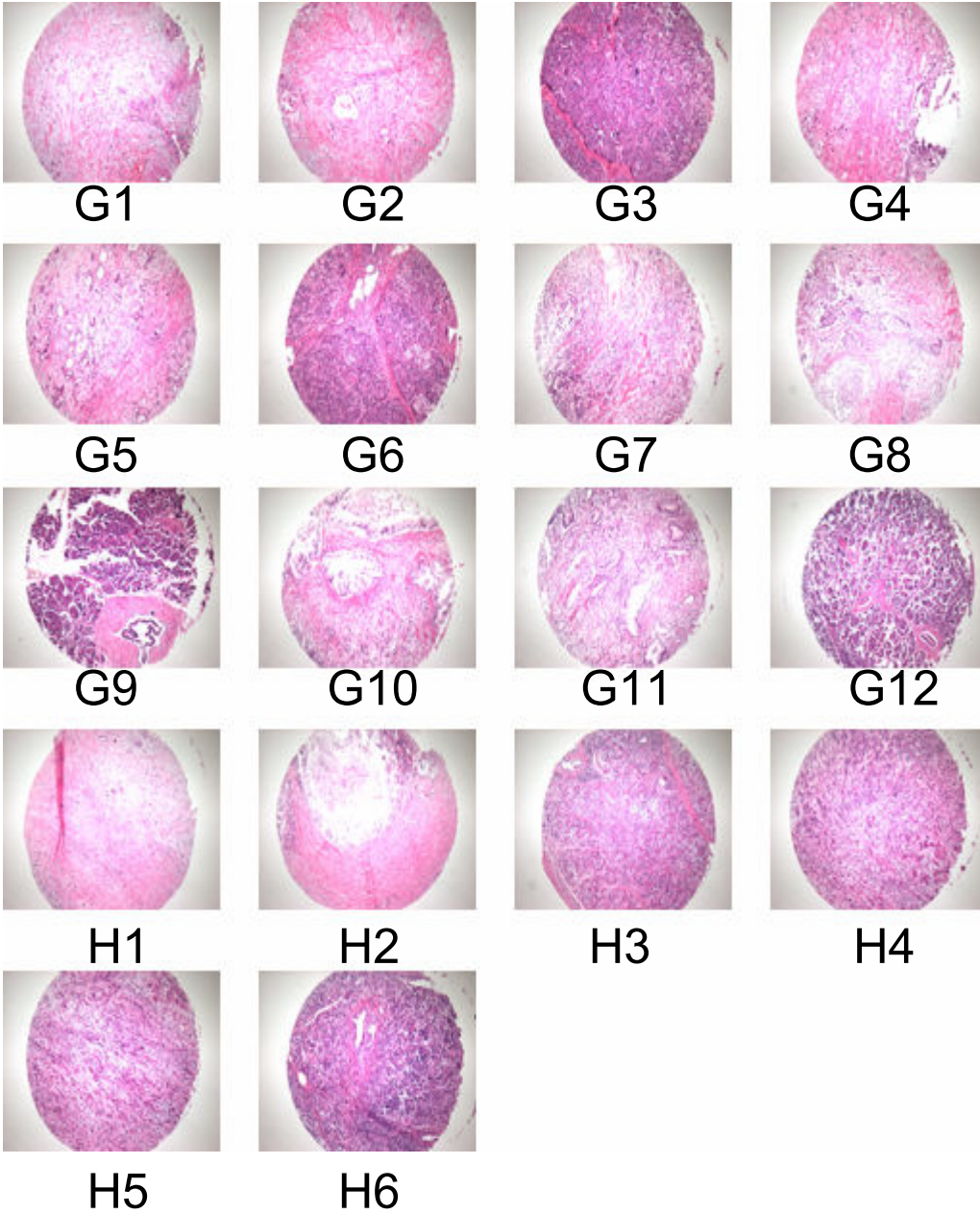


**A307- Pancreas cancer tissues with
corresponding normal tissues**

(formalin fixed)

For research use only

**QC sheet_LOT#132130701131
Hematoxylin and Eosin staining**



A307: Pancreas cancer tissues with corresponding normal tissues

No	Coordinate	Age	Sex	Histological Diagnosis	Differentiate	Site	Size	T	N	M	Stage
1	A 1,2	M	63	adenocarcinoma	moderate	head	1.4	3	1	0	IIB
2	A 3	M	63	non-neoplastic	non-neoplastic from A1,2						
3	A 4,5	M	47	adenocarcinoma	moderate	head	4	3	1	0	IIB
4	A 6	M	47	non-neoplastic	non-neoplastic from A4,5						
5	A 7,8	F	65	adenocarcinoma	moderate	head	6	3	0	0	IIA
6	A 9	F	65	non-neoplastic	non-neoplastic from A7,8						
7	A 10,11	M	65	adenocarcinoma	moderate	head	1.5	3	0	0	IIA
8	A 12	M	65	non-neoplastic	non-neoplastic from A10,11						
9	B 1,2	M	64	adenocarcinoma	moderate	head	3	3	1	0	IIB
10	B 3	M	64	non-neoplastic	non-neoplastic from B1,2						
11	B 4,5	F	46	adenocarcinoma	moderate	head	3	4	1	0	III
12	B 6	F	46	non-neoplastic	non-neoplastic from B4,5						
13	B 7,8	M	59	adenocarcinoma	moderate	head	4.5	3	0	0	IIA
14	B 9	M	59	non-neoplastic	non-neoplastic from B7,8						
15	B 10,11	M	64	adenocarcinoma	moderate	head	2.5	3	0	0	IIA
16	B 12	M	64	non-neoplastic	non-neoplastic from B10,11						
17	C 1,2	M	46	adenocarcinoma	moderate	head	3.5	3	0	0	IIA
18	C 3	M	46	non-neoplastic	non-neoplastic from C1,2						
19	C 4,5	M	62	adenocarcinoma	moderate	body	6.5	2	1	0	IIB
20	C 6	M	62	non-neoplastic	non-neoplastic from C4,5						
21	C 7,8	F	66	adenocarcinoma	moderate	head	2.5	2	1	0	IIB
22	C 9	F	66	non-neoplastic	non-neoplastic from C7,8						
23	C 10,11	M	55	adenocarcinoma	moderate	head	3	3	1	0	IIB
24	C 12	M	55	non-neoplastic	non-neoplastic from C10,11						
25	D 1,2	M	69	adenocarcinoma	moderate	head	3	3	1	0	IIB
26	D 3	M	69	non-neoplastic	non-neoplastic from D1,2						
27	D 4,5	M	53	adenocarcinoma	moderate	head	2	3	1	0	IIB
28	D 6	M	53	non-neoplastic	non-neoplastic from D4,5						
29	D 7,8	F	61	adenocarcinoma	moderate	head	1.5	3	1	0	IIB
30	D 9	F	61	non-neoplastic	non-neoplastic from D7,8						
31	D 10,11	M	42	adenocarcinoma	moderate	head	1.6	3	0	0	IIA
32	D 12	M	42	non-neoplastic	non-neoplastic from D10,11						

A307: Pancreas cancer tissues with corresponding normal tissues

No	Coordinate	Age	Sex	Histological Diagnosis	Differentiate	Site	Size	T	N	M	Stage
33	E 1,2	F 50	adenocarcinoma	moderate	head	2.5	3	1	0	IIB	
34	E 3	F 50	non-neoplastic	non-neoplastic from E1,2							
35	E 4,5	M 68	adenocarcinoma	moderate	head	2	3	1	0	IIB	
36	E 6	M 68	non-neoplastic	non-neoplastic from E4,5							
37	E 7,8	M 71	adenocarcinoma	moderate	head	3	3	1	0	IIB	
38	E 9	M 71	non-neoplastic	non-neoplastic from E7,8							
39	E 10,11	F 80	adenocarcinoma	moderate	head	1	3	0	0	IIA	
40	E 12	F 80	non-neoplastic	non-neoplastic from E10,11							
41	F 1,2	M 69	adenocarcinoma	poorly	head	3	3	1	0	IIB	
42	F 3	M 69	non-neoplastic	non-neoplastic from F1,2							
43	F 4,5	M 55	adenocarcinoma	poorly	tail	3	3	0	0	IIA	
44	F 6	M 55	non-neoplastic	non-neoplastic from F4,5							
45	F 7,8	F 40	adenocarcinoma	poorly	head	3	4	1	0	III	
46	F 9	F 40	non-neoplastic	non-neoplastic from F7,8							
47	F 10,11	F 56	adenocarcinoma	poorly	head	4	3	0	0	IIA	
48	F 12	F 56	non-neoplastic	non-neoplastic from F10,11							
49	G 1,2	M 56	adenocarcinoma	poorly	head	2	3	0	0	IIA	
50	G 3	M 56	non-neoplastic	non-neoplastic from G1,2							
51	G 4,5	M 69	adenocarcinoma	poorly	head	2.5	3	1	0	IIB	
52	G 6	M 69	non-neoplastic	non-neoplastic from G4,5							
53	G 7,8	M 43	adenocarcinoma	poorly	head	1.5	3	1	0	IIB	
54	G 9	M 43	non-neoplastic	non-neoplastic from G7,8							
55	G 10,11	M 70	adenocarcinoma	well	head	3.2	3	1	0	IIB	
56	G 12	M 70	non-neoplastic	non-neoplastic from G10,11							
57	H 1,2	F 64	adenocarcinoma		body	2.5	3	0	0	IIA	
58	H 3	F 64	non-neoplastic	non-neoplastic from H1,2							
59	H 4,5	M 60	anaplastic	anaplastic	head	5.5	3	1	0	IIB	
60	H 6	M 60	non-neoplastic	non-neoplastic from H4,5							