

**A302IV - Prostate cancer tissues with
corresponding normal tissues**

(formalin fixed)

For research use only

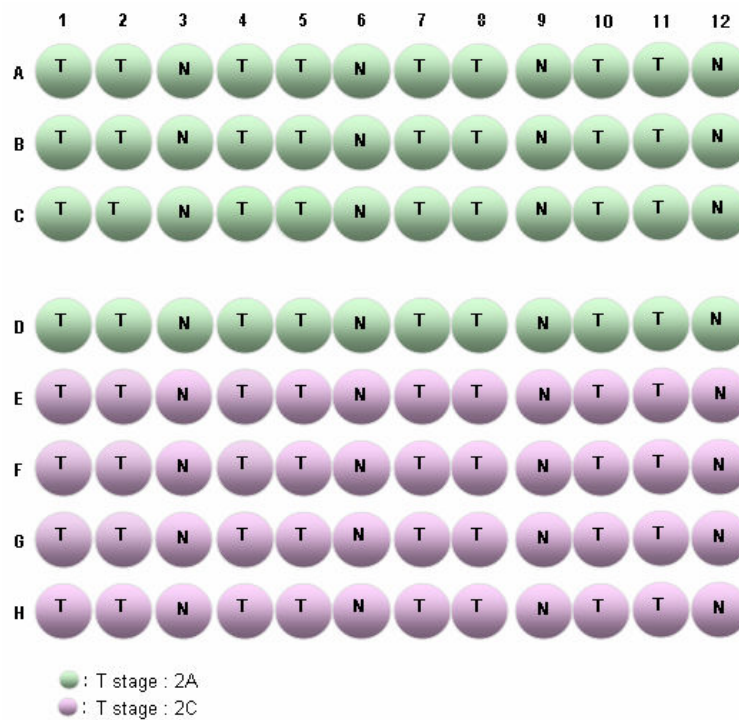
Specifications:

- No. of cases: 32
- Tissue type: Prostate cancer tissues with corresponding normal tissues
- No. of spots: 2 spots from each cancer case (64 spots)
32 non-neoplastic spots (32 spots)
- Total spots: 96
- Corresponding normal tissues with cancers: Yes
- Diameter: 1.0 mm

Documents:

- Product specification: layout, summary of tissue spots
- H&E stained images
- Detailed pathological information

Layout:



A302IV - Prostate cancer tissues with corresponding normal tissues

(formalin fixed)

For research use only

Summary of tissue spots

No	Coordinate	Sex	Age	Gleason score	Angioinvasion	T stage	Lymph node
1	1,2	m	57	7	0	2A	0
2	3	m	57	non-neoplastic from A1,2			
3	4,5	m	68	7	0	2A	0
4	6	m	68	non-neoplastic from A4,5			
5	7,8	m	55	9	0	2A	0
6	9	m	55	non-neoplastic from A7,8			
7	10,11	m	70	7	0	2A	0
8	12	m	70	non-neoplastic from A10,11			
9	1,2	m	69	8	0	2A	0
10	3	m	69	non-neoplastic from B1,2			
11	4,5	m	55	9	0	2A	0
12	6	m	55	non-neoplastic from B4,5			
13	7,8	m	65	7	0	2A	0
14	9	m	65	non-neoplastic from B7,8			
15	10,11	m	65	7	0	2A	0
16	12	m	65	non-neoplastic from B10,11			
17	1,2	m	63	7	0	2A	0
18	3	m	63	non-neoplastic from C1,2			
19	4,5	m	52	9	0	2A	0
20	6	m	52	non-neoplastic from C4,5			
21	7,8	m	66	8	0	2A	0
22	9	m	66	non-neoplastic from C7,8			
23	10,11	m	52	7	0	2A	0
24	12	m	52	non-neoplastic from C10,11			
25	1,2	m	70	6	0	2A	0
26	3	m	70	non-neoplastic from D1,2			
27	4,5	m	58	7	0	2A	0
28	6	m	58	non-neoplastic from D4,5			
29	7,8	m	68	7	0	2A	0
30	9	m	68	non-neoplastic from D7,8			
31	10,11	m	70	6	0	2A	0
32	12	m	70	non-neoplastic from D10,11			
33	1,2	m	59	8	0	2C	0
34	3	m	59	non-neoplastic from E1,2			
35	4,5	m	66	9	0	2C	0
36	6	m	66	non-neoplastic from E4,5			
37	7,8	m	62	7	1	2C	0
38	9	m	62	non-neoplastic from E7,8			
39	10,11	m	71	8	0	2C	0
40	12	m	71	non-neoplastic from E10,11			

A302IV - Prostate cancer tissues with corresponding normal tissues

(formalin fixed)

For research use only

Summary of tissue spots

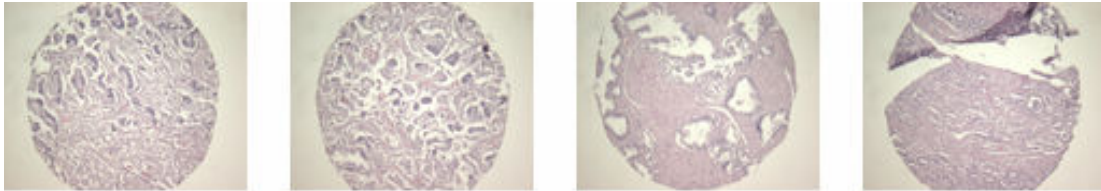
No	Coordinate	Sex	Age	Gleason score	Angioinvasion	T stage	Lymph node	
41	F	1,2	m	56	8	0	2C	0
42		3	m	56	non-neoplastic from F1,2			
43		4,5	m	44	9	0	2C	0
44		6	m	44	non-neoplastic from F4,5			
45		7,8	m	63	6	0	2C	0
46		9	m	63	non-neoplastic from F7,8			
47		10,11	m	80	7	0	2C	0
48		12	m	80	non-neoplastic from F10,11			
49	G	1,2	m	73	7	0	2C	0
50		3	m	73	non-neoplastic from G1,2			
51		4,5	m	67	7	0	2C	0
52		6	m	67	non-neoplastic from G4,5			
53		7,8	m	64	7	0	2C	0
54		9	m	64	non-neoplastic from G7,8			
55		10,11	m	68	6	0	2C	0
56		12	m	68	non-neoplastic from G10,11			
57	H	1,2	m	66	6	0	2C	0
58		3	m	66	non-neoplastic from H1,2			
59		4,5	m	69	7	0	2C	0
60		6	m	69	non-neoplastic from H4,5			
61		7,8	m	61	7	0	2C	0
62		9	m	61	non-neoplastic from H7,8			
63		10,11	m	51	6	0	2C	0
64		12	m	51	non-neoplastic from H10,11			

**A302IV - Prostate cancer tissues with
corresponding normal tissues**

(formalin fixed)

For research use only

**QC sheet_LOT#132130802141
Hematoxylin and Eosin staining**

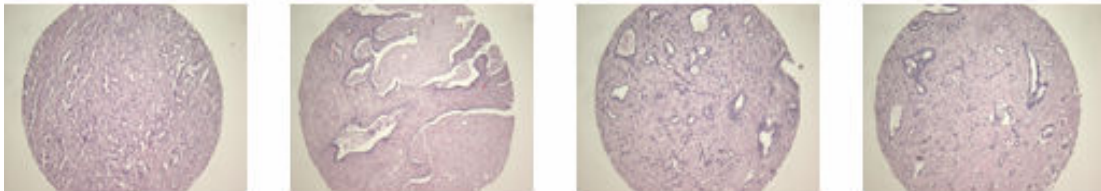


A1

A2

A3

A4

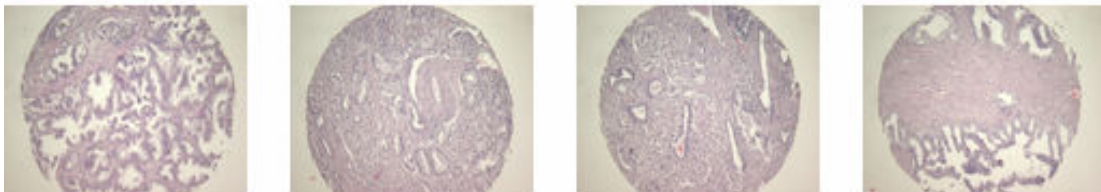


A5

A6

A7

A8

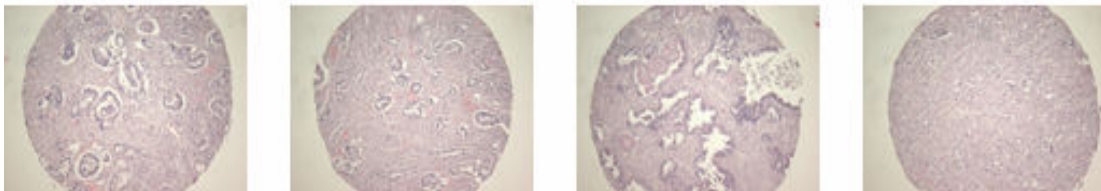


A9

A10

A11

A12

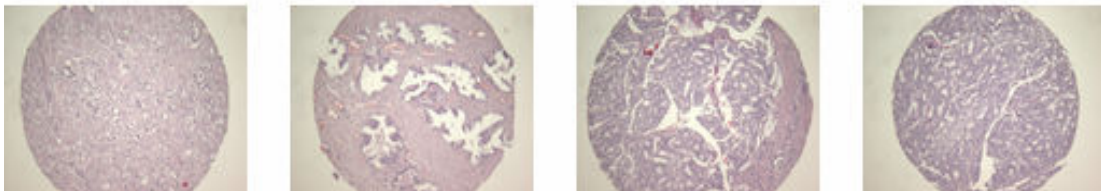


B1

B2

B3

B4

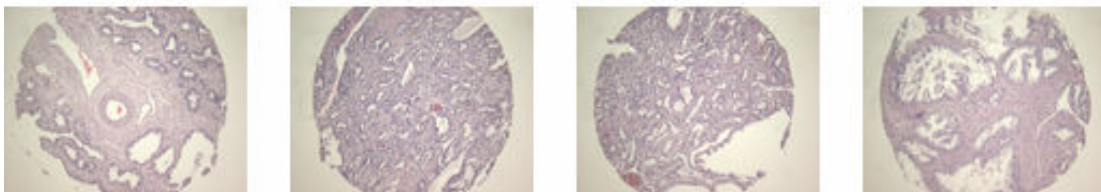


B5

B6

B7

B8



B9

B10

B11

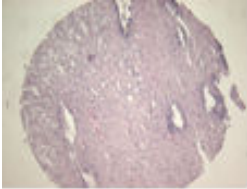
B12

**A302IV - Prostate cancer tissues with
corresponding normal tissues**

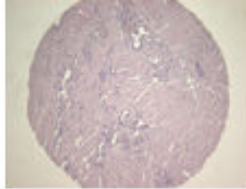
(formalin fixed)

For research use only

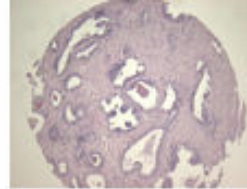
**QC sheet_LOT#132130802141
Hematoxylin and Eosin staining**



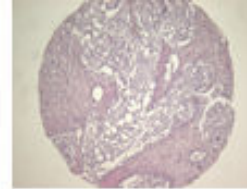
C1



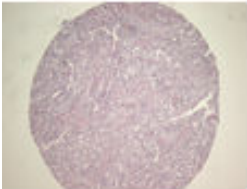
C2



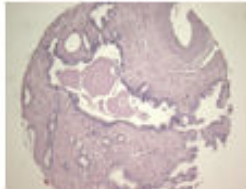
C3



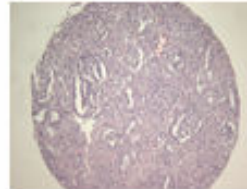
C4



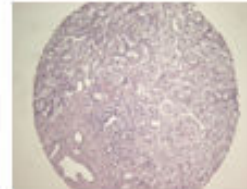
C5



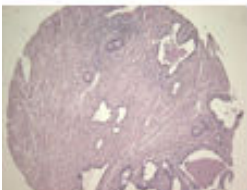
C6



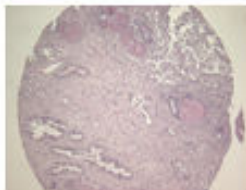
C7



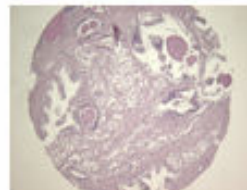
C8



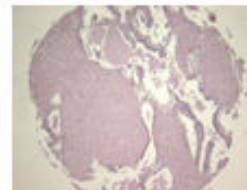
C9



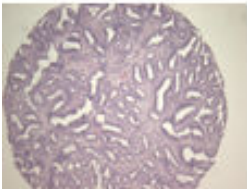
C10



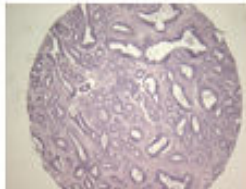
C11



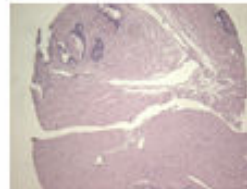
C12



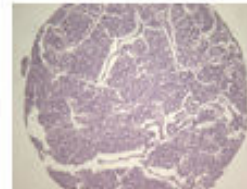
D1



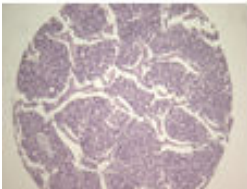
D2



D3



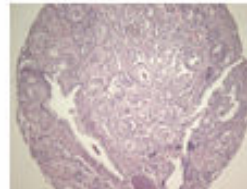
D4



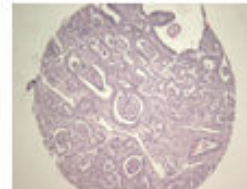
D5



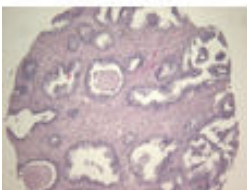
D6



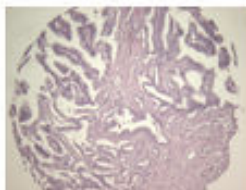
D7



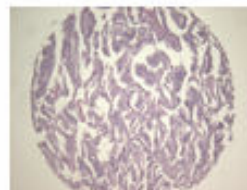
D8



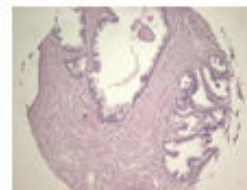
D9



D10



D11



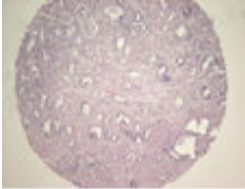
D12

**A302IV - Prostate cancer tissues with
corresponding normal tissues**

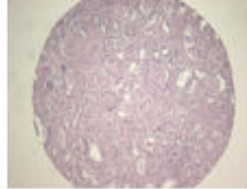
(formalin fixed)

For research use only

**QC sheet_LOT#132130802141
Hematoxylin and Eosin staining**



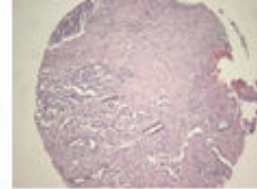
E1



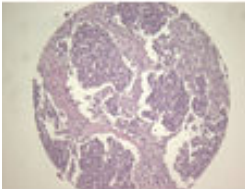
E2



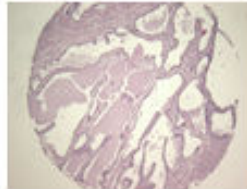
E3



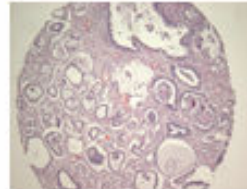
E4



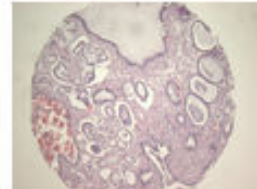
E5



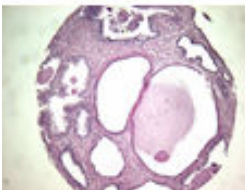
E6



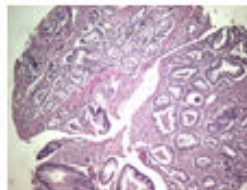
E7



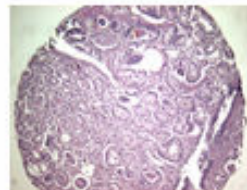
E8



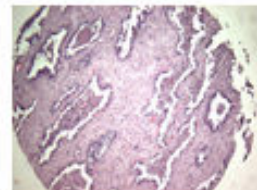
E9



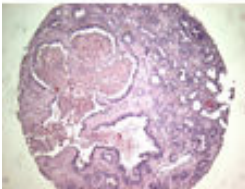
E10



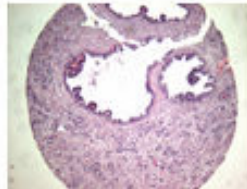
E11



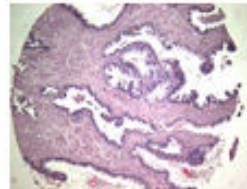
E12



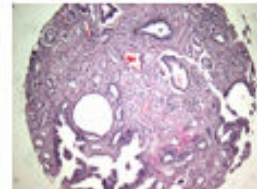
F1



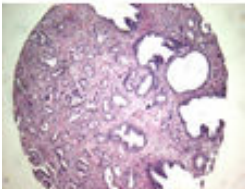
F2



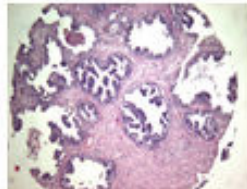
F3



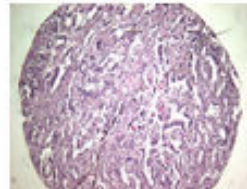
F4



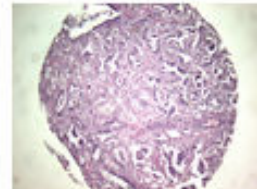
F5



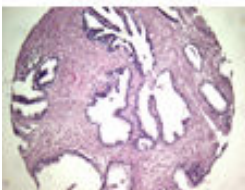
F6



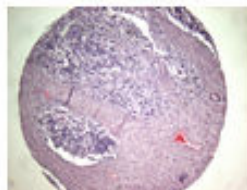
F7



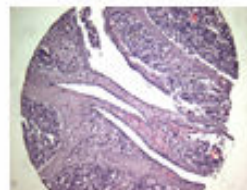
F8



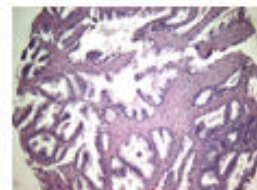
F9



F10



F11



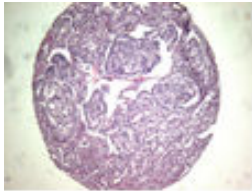
F12

**A302IV - Prostate cancer tissues with
corresponding normal tissues**

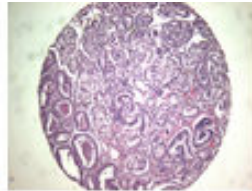
(formalin fixed)

For research use only

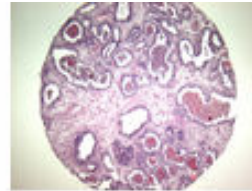
**QC sheet_LOT#132130802141
Hematoxylin and Eosin staining**



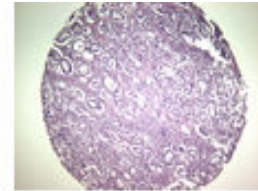
G1



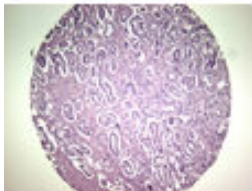
G2



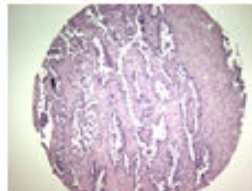
G3



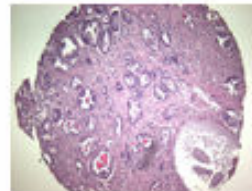
G4



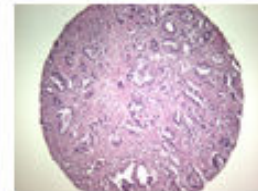
G5



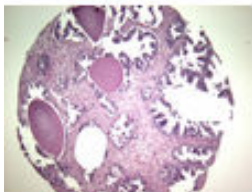
G6



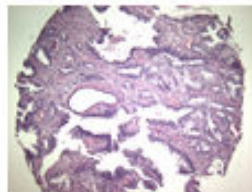
G7



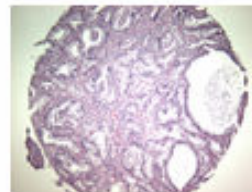
G8



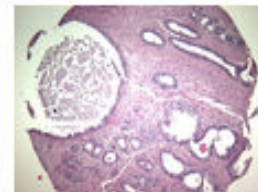
G9



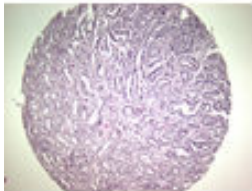
G10



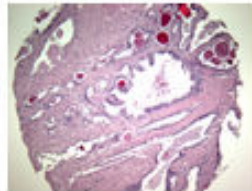
G11



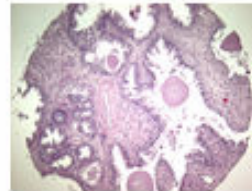
G12



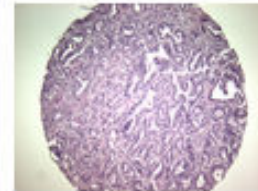
H1



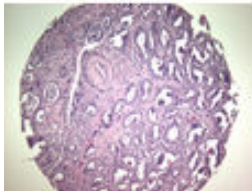
H2



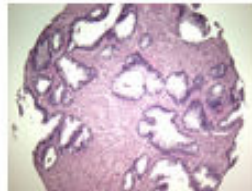
H3



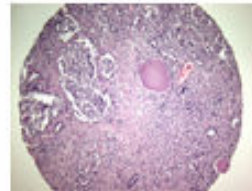
H4



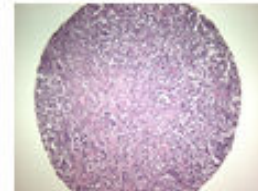
H5



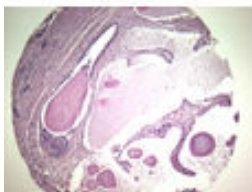
H6



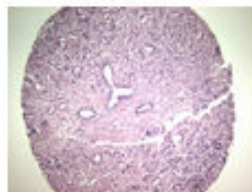
H7



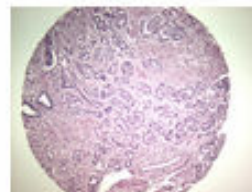
H8



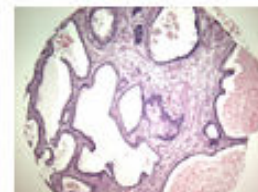
H9



H10



H11



H12

A302IV: Prostate cancer tissues with corresponding normal tissues

No	Coordinate		Sex	Age	Primary pattern	Secondary pattern	Gleason score	Volume (%)	Size (c m)	Resection margin	Peripheral tumor invasion	Angioinvasion	T stage	Lymph node
1	A	1,2	m	57	3	4	7	10	1.2	0	0	0	2A	0
2	A	3	m	57	non-neoplastic from A1,2									
3	A	4,5	m	68	3	4	7	10	2.5	0	0	0	2A	0
4	A	6	m	68	non-neoplastic from A4,5									
5	A	7,8	m	55	4	5	9	10	2	0	1	0	2A	0
6	A	9	m	55	non-neoplastic from A7,8									
7	A	10,11	m	70	4	3	7	20	2.8	0	1	0	2A	0
8	A	12	m	70	non-neoplastic from A10,11									
9	B	1,2	m	69	5	3	8	10	1.4	0	1	0	2A	0
10	B	3	m	69	non-neoplastic from B1,2									
11	B	4,5	m	55	4	5	9	20	2.1	0	1	0	2A	0
12	B	6	m	55	non-neoplastic from B4,5									
13	B	7,8	m	65	4	3	7	10	1.8	0	1	0	2A	0
14	B	9	m	65	non-neoplastic from B7,8									
15	B	10,11	m	65	3	4	7	5	2.1	0	1	0	2A	0
16	B	12	m	65	non-neoplastic from B10,11									
17	C	1,2	m	63	3	4	7	10	2.1	0	1	0	2A	0
18	C	3	m	63	non-neoplastic from C1,2									
19	C	4,5	m	52	4	5	9	10	1.4	0	1	0	2A	0
20	C	6	m	52	non-neoplastic from C4,5									
21	C	7,8	m	66	4	4	8	10	1.5	0	1	0	2A	0
22	C	9	m	66	non-neoplastic from C7,8									
23	C	10,11	m	52	3	4	7	10	1.2	0	0	0	2A	0
24	C	12	m	52	non-neoplastic from C10,11									
25	D	1,2	m	70	3	3	6	5	0.8	0	0	0	2A	0
26	D	3	m	70	non-neoplastic from D1,2									
27	D	4,5	m	58	4	3	7	5	2.6	0	0	0	2A	0
28	D	6	m	58	non-neoplastic from D4,5									

A302IV: Prostate cancer tissues with corresponding normal tissues

No	Coordinate		Sex	Age	Primary pattern	Secondary pattern	Gleason score	Volume (%)	Size (c m)	Resection margin	Peripheral tumor invasion	Angioinvasion	T stage	Lymph node
29	D	7,8	m	68	3	4	7	10	1.5	0	1	0	2A	0
30	D	9	m	68	non-neoplastic from D7,8									
31	D	10,11	m	70	3	3	6	10	2	0	1	0	2A	0
32	D	12	m	70	non-neoplastic from D10,11									
33	E	1,2	m	59	4	4	8	10	1.5	0	1	0	2C	0
34	E	3	m	59	non-neoplastic from E1,2									
35	E	4,5	m	66	4	5	9	20	2.5	0	1	0	2C	0
36	E	6	m	66	non-neoplastic from E4,5									
37	E	7,8	m	62	3	4	7	10	2.2	0	1	1	2C	0
38	E	9	m	62	non-neoplastic from E7,8									
39	E	10,11	m	71	4	4	8	15	4	0	1	0	2C	0
40	E	12	m	71	non-neoplastic from E10,11									
41	F	1,2	m	56	4	4	8	10	1.8	0	1	0	2C	0
42	F	3	m	56	non-neoplastic from F1,2									
43	F	4,5	m	44	4	5	9	10	2.2	0	1	0	2C	0
44	F	6	m	44	non-neoplastic from F4,5									
45	F	7,8	m	63	3	3	6	5	1	0	0	0	2C	0
46	F	9	m	63	non-neoplastic from F7,8									
47	F	10,11	m	80	3	4	7	20	3	0	1	0	2C	0
48	F	12	m	80	non-neoplastic from F10,11									
49	G	1,2	m	73	3	4	7	20	2.7	0	1	0	2C	0
50	G	3	m	73	non-neoplastic from G1,2									
51	G	4,5	m	67	3	4	7	10	2.4	0	1	0	2C	0
52	G	6	m	67	non-neoplastic from G4,5									
53	G	7,8	m	64	3	4	7	25	2.8	0	1	0	2C	0
54	G	9	m	64	non-neoplastic from G7,8									
55	G	10,11	m	68	3	3	6	20	2.1	0	1	0	2C	0
56	G	12	m	68	non-neoplastic from G10,11									

A302IV: Prostate cancer tissues with corresponding normal tissues

No	Coordinate		Sex	Age	Primary pattern	Secondary pattern	Gleason score	Volume (%)	Size (c m)	Resection margin	Peripheral tumor invasion	Angioinvasion	T stage	Lymph node
57	H	1,2	m	66	3	3	6	10	3.2	0	0	0	2C	0
58	H	3	m	66	non-neoplastic from H1,2									
59	H	4,5	m	69	3	4	7	10	2.1	0	1	0	2C	0
60	H	6	m	69	non-neoplastic from H4,5									
61	H	7,8	m	61	4	3	7	20	3.5	0	1	0	2C	0
62	H	9	m	61	non-neoplastic from H7,8									
63	H	10,11	m	51	3	3	6	10	2.1	0	1	0	2C	0
64	H	12	m	51	non-neoplastic from H10,11									