

(formalin fixed)

For research use only

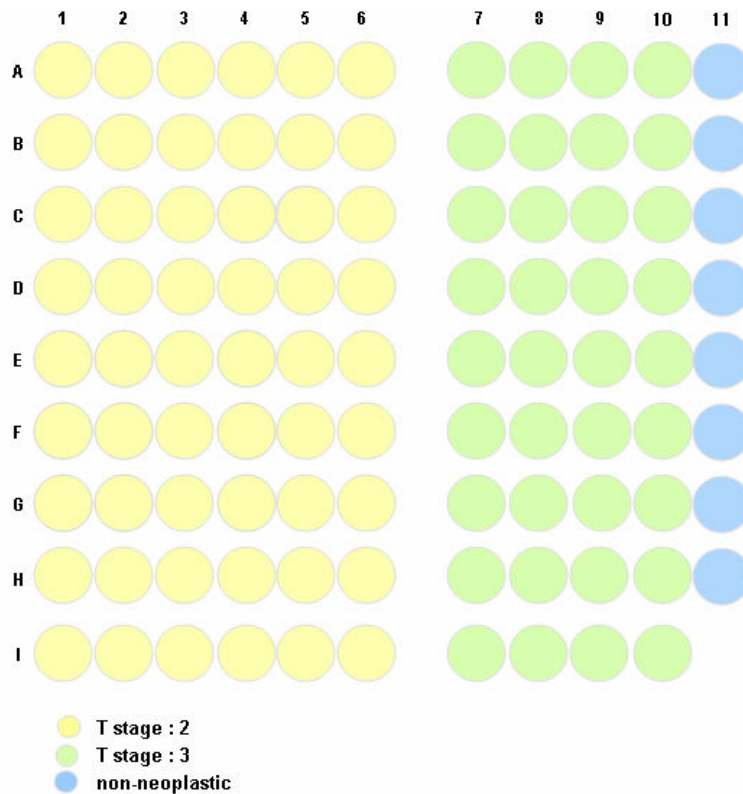
**Specifications:**

- No. of cases: 45
- Tissue type: Lung cancer tissues
- No. of spots: 2 spots from each cancer case (90 spots)  
8 non-neoplastic spots (8 spots)
- Total spots: 98
- Corresponding normal tissues with cancers: Yes
- Diameter: 1.0 mm

**Documents:**

- Product specification: layout, summary of tissue spots
- H&E stained images
- Detailed pathological information

**Layout:**



(formalin fixed)

For research use only

**Summary of tissue spots**

No	Coordinate	Age	Pathology	gleason score	Size (cm)	T stage	Lymph node
1	A 1,2	68	Adenocarcinoma	7	2.5	2A	0
2	A 3,4	69	Adenocarcinoma	8	1.4	2A	0
3	A 5,6	55	Adenocarcinoma	9	2.1	2A	0
4	A 7,8	64	Adenocarcinoma	9	2.9	3A	0
5	A 9,10	60	Adenocarcinoma	9	2.4	3A	N1
6	A 11	Non-neoplastic from A1,2					
7	B 1,2	65	Adenocarcinoma	7	1.8	2A	0
8	B 3,4	52	Adenocarcinoma	9	1.4	2A	0
9	B 5,6	70	Adenocarcinoma	7	2.8	2A	0
10	B 7,8	52	Adenocarcinoma	7	2.7	3A	0
11	B 9,10	66	Adenocarcinoma	7	2.2	3A	0
12	B 11	Non-neoplastic from C1,2					
13	C 1,2	71	Adenocarcinoma	6	1.2	2A	0
14	C 3,4	66	Adenocarcinoma	7	2.4	2A	0
15	C 5,6	59	Adenocarcinoma	7	2.4	2A	0
16	C 7,8	66	Adenocarcinoma	7	1.5	3A	0
17	C 9,10	64	Adenocarcinoma	7	3.5	3A	0
18	C 11	Non-neoplastic from G1,2					
19	D 1,2	44	Adenocarcinoma	6	1.8	2A	0
20	D 3,4	70	Adenocarcinoma	9	3.2	2B	0
21	D 5,6	59	Adenocarcinoma	8	1.5	2C	0
22	D 7,8	68	Adenocarcinoma	7	5	3A	0
23	D 9,10	68	Adenocarcinoma	9	2.4	3A	0
24	D 11	Non-neoplastic from G3,4					
25	E 1,2	44	Adenocarcinoma	9	2.2	2C	0
26	E 3,4	80	Adenocarcinoma	7	3	2C	0
27	E 5,6	73	Adenocarcinoma	7	2.7	2C	0
28	E 7,8	64	Adenocarcinoma	6	3.6	3A	0
29	E 9,10	59	Adenocarcinoma	9	3.6	3A	0
30	E 11	Non-neoplastic from H3,4					

(formalin fixed)

For research use only

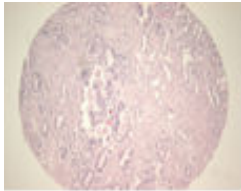
**Summary of tissue spots**

No	Coordinate	Age	Pathology	gleason score	Size (cm)	T stage	Lymph node
31	F 1,2	67	Adenocarcinoma	7	2.4	2C	0
32	F 3,4	68	Adenocarcinoma	6	2.1	2C	0
33	F 5,6	66	Adenocarcinoma	6	3.2	2C	0
34	F 7,8	73	Adenocarcinoma	8	3.3	3A	0
35	F 9,10	64	Adenocarcinoma	6	3.5	3A	0
36	F 11	Non-neoplastic from H5,6					
37	G 1,2	69	Adenocarcinoma	7	2.1	2C	0
38	G 3,4	61	Adenocarcinoma	7	3.5	2C	0
39	G 5,6	66	Adenocarcinoma	7	3.3	2C	0
40	G 7,8	59	Adenocarcinoma	7	4	3A	0
41	G 9,10	65	Adenocarcinoma	9	2.3	3B	N1
42	G 11	Non-neoplastic from A9,10					
43	H 1,2	64	Adenocarcinoma	7	3	2C	0
44	H 3,4	69	Adenocarcinoma	7	2.5	2C	0
45	H 5,6	69	Adenocarcinoma	7	3	2C	0
46	H 7,8	66	Adenocarcinoma	7	3.3	3B	0
47	H 9,10	55	Adenocarcinoma	7	3.6	3B	0
48	H 11	Non-neoplastic from C7,8					
49	I 1,2	64	Adenocarcinoma	7	2.7	2C	0
50	I 3,4	60	Adenocarcinoma	7	1.2	2C	0
51	I 5,6	58	Adenocarcinoma	6	2.1	2C	0
52	I 7,8	70	Adenocarcinoma	7	2.7	3B	0
53	I 9,10	70	Adenocarcinoma	9	4.8	3B	0

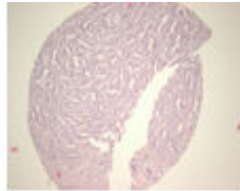
(formalin fixed)

For research use only

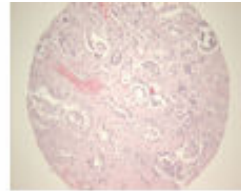
QC sheet\_LOT#122120707312  
Hematoxylin and Eosin staining



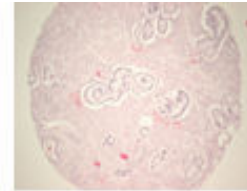
A1



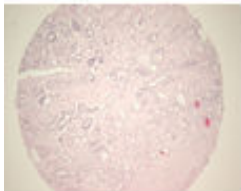
A2



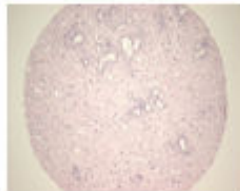
A3



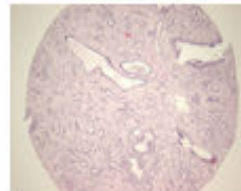
A4



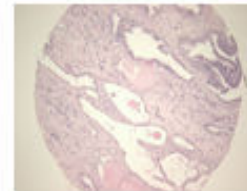
A5



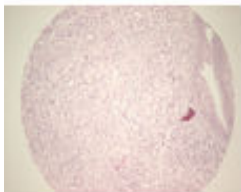
A6



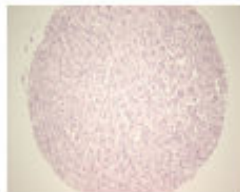
A7



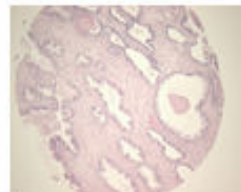
A8



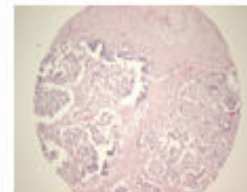
A9



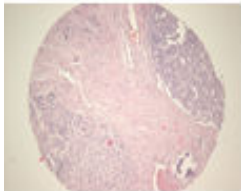
A10



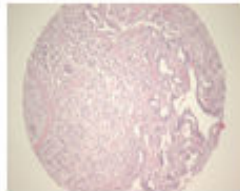
A11



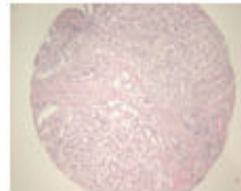
B1



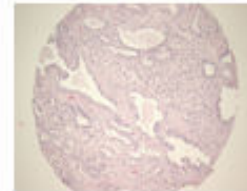
B2



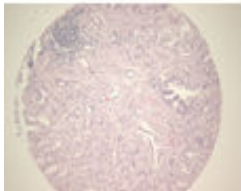
B3



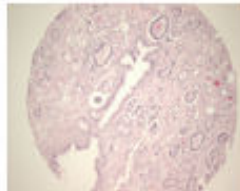
B4



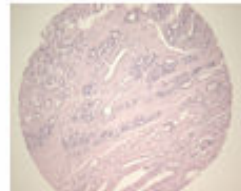
B5



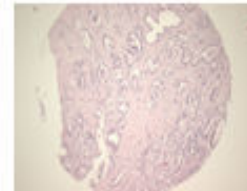
B6



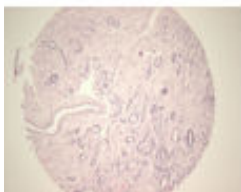
B7



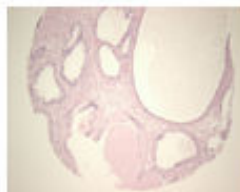
B8



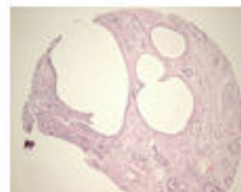
B9



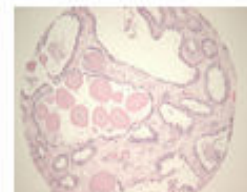
B10



B11



C1

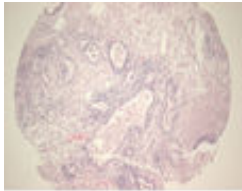


C2

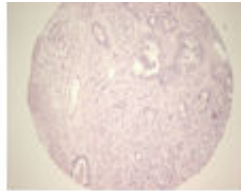
(formalin fixed)

For research use only

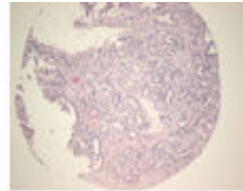
QC sheet\_LOT#122120707312  
Hematoxylin and Eosin staining



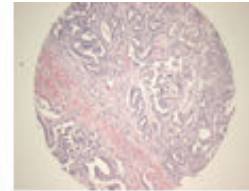
C3



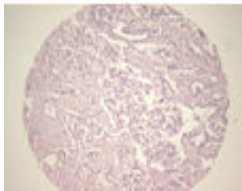
C4



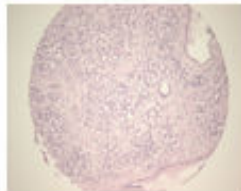
C5



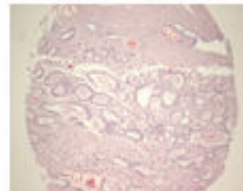
C6



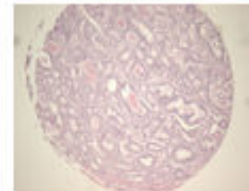
C7



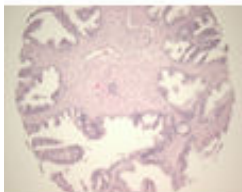
C8



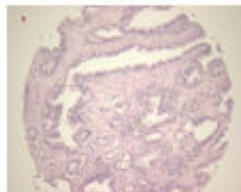
C9



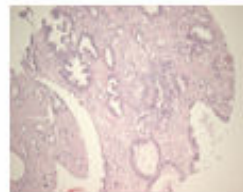
C10



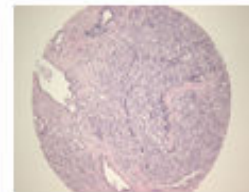
C11



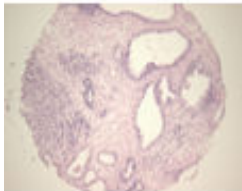
D1



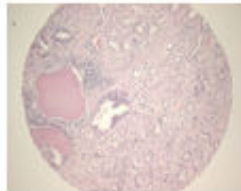
D2



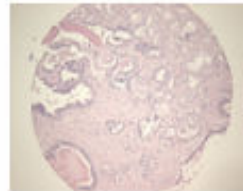
D3



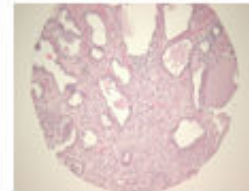
D4



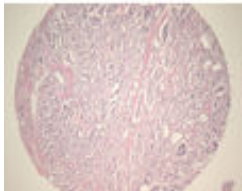
D5



D6



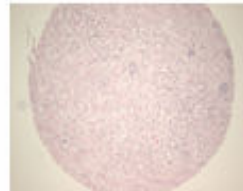
D7



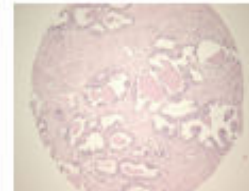
D8



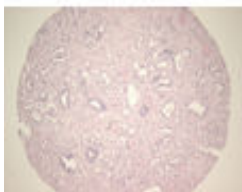
D9



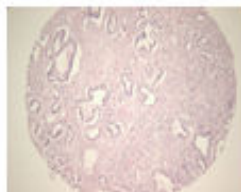
D10



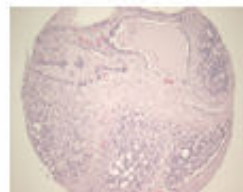
D11



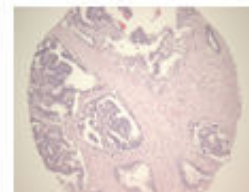
E1



E2



E3

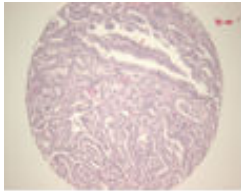


E4

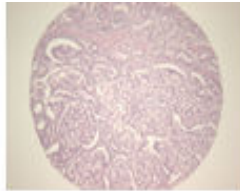
(formalin fixed)

For research use only

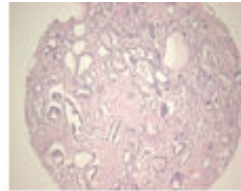
QC sheet\_LOT#122120707312  
Hematoxylin and Eosin staining



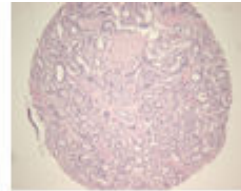
E5



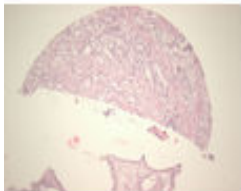
E6



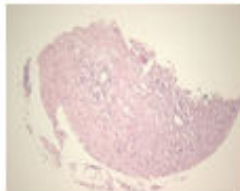
E7



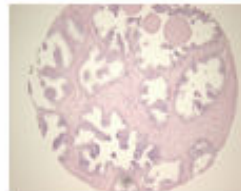
E8



E9



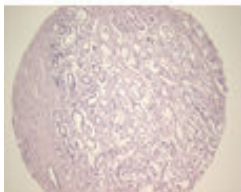
E10



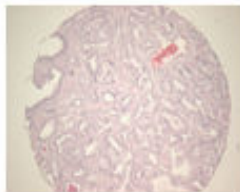
E11



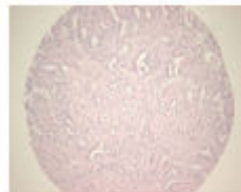
F1



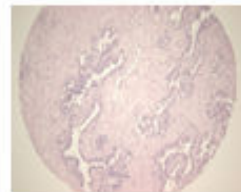
F2



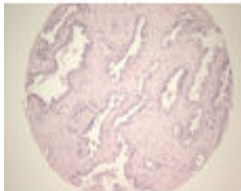
F3



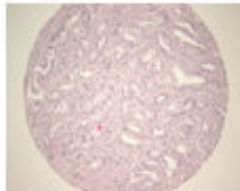
F4



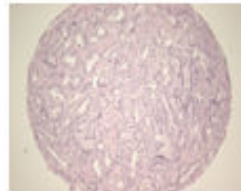
F5



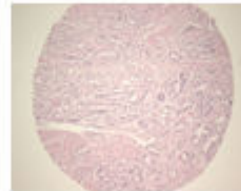
F6



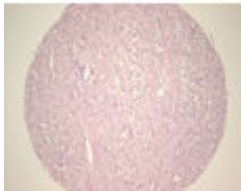
F7



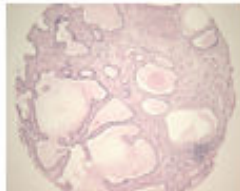
F8



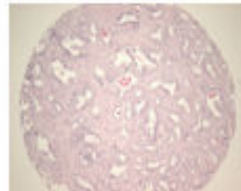
F9



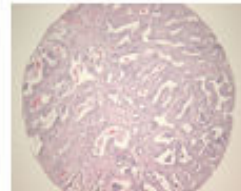
F10



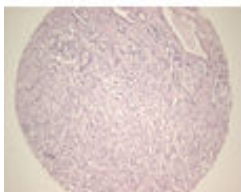
F11



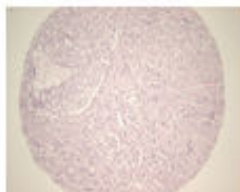
G1



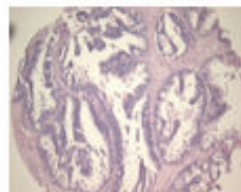
G2



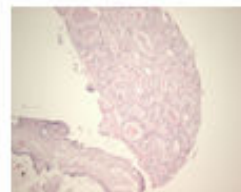
G3



G4



G5

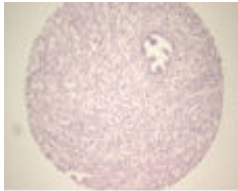


G6

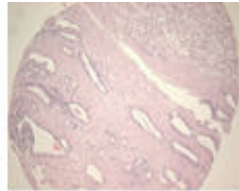
(formalin fixed)

For research use only

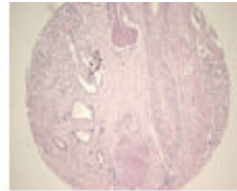
QC sheet\_LOT#122120707312  
Hematoxylin and Eosin staining



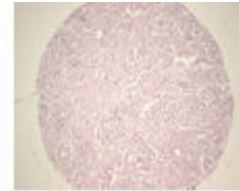
G7



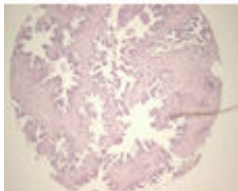
G8



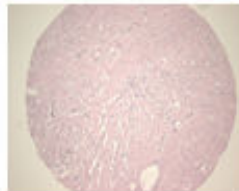
G9



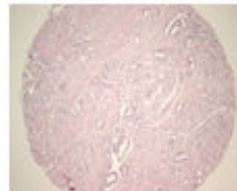
G10



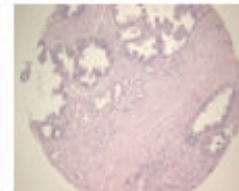
G11



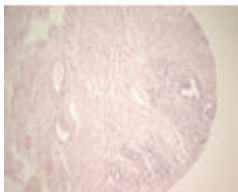
H1



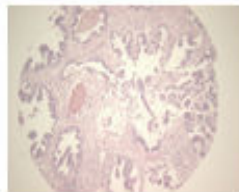
H2



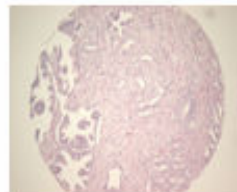
H3



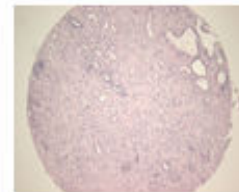
H4



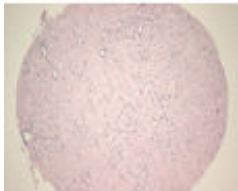
H5



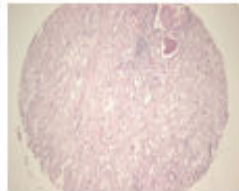
H6



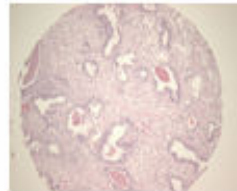
H7



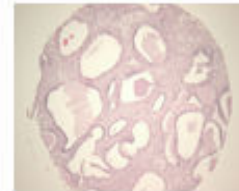
H8



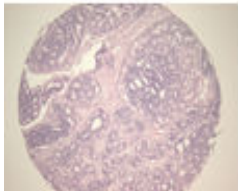
H9



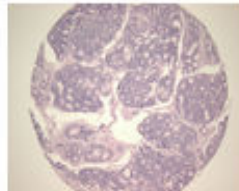
H10



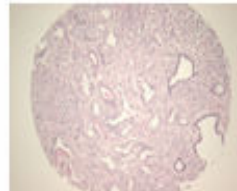
H11



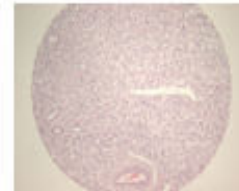
I1



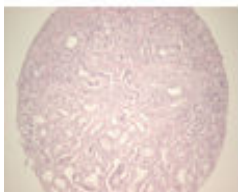
I2



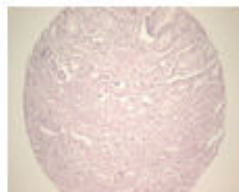
I3



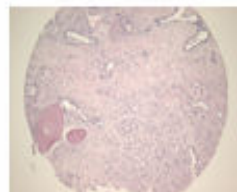
I4



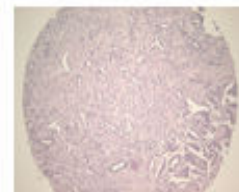
I5



I6



I7

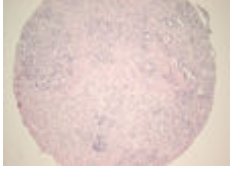


I8

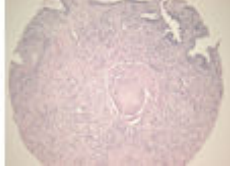
(formalin fixed)

For research use only

**QC sheet\_LOT#122120707312**  
**Hematoxylin and Eosin staining**



I9



I10

**A222 III: Prostate cancer tissues**

No	Coordinate		Age	Pathology	Primary pattern	Secondary pattern	Gleason score	Volume (%)	Size (cm)	Resection margin	Peripheral tumor invasion	angioinvasion	T stage	Lymph node
1	A	1,2	68	adenocarcinoma	3	4	7	10	2.5	0	0	0	2A	0
2	A	3,4	69	adenocarcinoma	5	3	8	10	1.4	0	1	0	2A	0
3	A	5,6	55	adenocarcinoma	4	5	9	20	2.1	0	1	0	2A	0
4	A	7,8	64	adenocarcinoma	4	5	9	35	2.9	1	1	0	3A	0
5	A	9,10	60	adenocarcinoma	4	5	9	30	2.4	1	1	1	3A	N1
6	A	11	non-neoplastic from A1,2											
7	B	1,2	65	adenocarcinoma	4	3	7	10	1.8	0	1	0	2A	0
8	B	3,4	52	adenocarcinoma	4	5	9	10	1.4	0	1	0	2A	0
9	B	5,6	70	adenocarcinoma	4	3	7	20	2.8	0	1	0	2A	0
10	B	7,8	52	adenocarcinoma	3	4	7	20	2.7	1	1	0	3A	0
11	B	9,10	66	adenocarcinoma	3	4	7	5	2.2	1	1	0	3A	0
12	B	11	non-neoplastic from C1,2											
13	C	1,2	71	adenocarcinoma	3	3	6	5	1.2	0	1	0	2A	0
14	C	3,4	66	adenocarcinoma	4	3	7	5	2.4	0	0	0	2A	0
15	C	5,6	59	adenocarcinoma	3	4	7	10	2.4	0	1	0	2A	0
16	C	7,8	66	adenocarcinoma	3	4	7	5	1.5	1	1	0	3A	0
17	C	9,10	64	adenocarcinoma	3	4	7	10	3.5	1	0	0	3A	0
18	C	11	non-neoplastic from G1,2											
19	D	1,2	44	adenocarcinoma	3	3	6	10	1.8	0	1	0	2A	0
20	D	3,4	70	adenocarcinoma	4	5	9	30	3.2	0	1	0	2B	0
21	D	5,6	59	adenocarcinoma	4	4	8	10	1.5	0	1	0	2C	0
22	D	7,8	68	adenocarcinoma	3	4	7	70	5	1	1	0	3A	0
23	D	9,10	68	adenocarcinoma	4	5	9	30	2.4	1	1	0	3A	0
24	D	11	non-neoplastic from G3,4											
25	E	1,2	44	adenocarcinoma	4	5	9	10	2.2	0	1	0	2C	0
26	E	3,4	80	adenocarcinoma	3	4	7	20	3	0	1	0	2C	0
27	E	5,6	73	adenocarcinoma	3	4	7	20	2.7	0	1	0	2C	0
28	E	7,8	64	adenocarcinoma	3	3	6	30	3.6	1	1	0	3A	0

No	Coordinate		Age	Pathology	Primary pattern	Secondary pattern	Gleason score	Volume (%)	Size (cm)	Resection margin	Peripheral tumor invasion	angioinvasion	T stage	Lymph node
1	A	1,2	68	adenocarcinoma	3	4	7	10	2.5	0	0	0	2A	0
2	A	3,4	69	adenocarcinoma	5	3	8	10	1.4	0	1	0	2A	0
3	A	5,6	55	adenocarcinoma	4	5	9	20	2.1	0	1	0	2A	0
29	E	9,10	59	adenocarcinoma	4	5	9	30	3.6	1	1	0	3A	0
30	E	11	non-neoplastic from H3,4											
31	F	1,2	67	adenocarcinoma	3	4	7	10	2.4	0	1	0	2C	0
32	F	3,4	68	adenocarcinoma	3	3	6	20	2.1	0	1	0	2C	0
33	F	5,6	66	adenocarcinoma	3	3	6	10	3.2	0	0	0	2C	0
34	F	7,8	73	adenocarcinoma	4	4	8	40	3.3	1	1	0	3A	0
35	F	9,10	64	adenocarcinoma	3	3	6	30	3.5	1	1	0	3A	0
36	F	11	non-neoplastic from H5,6											
37	G	1,2	69	adenocarcinoma	3	4	7	10	2.1	0	1	0	2C	0
38	G	3,4	61	adenocarcinoma	4	3	7	20	3.5	0	1	0	2C	0
39	G	5,6	66	adenocarcinoma	3	4	7	10	3.3	0	1	0	2C	0
40	G	7,8	59	adenocarcinoma	4	3	7	90	4	1	1	0	3A	0
41	G	9,10	65	adenocarcinoma	4	5	9	20	2.3	0	1	0	3B	N1
42	G	11	non-neoplastic from A9,10											
43	H	1,2	64	adenocarcinoma	3	4	7	40	3	0	1	0	2C	0
44	H	3,4	69	adenocarcinoma	3	4	7	5	2.5	0	0	0	2C	0
45	H	5,6	69	adenocarcinoma	4	3	7	40	3	0	1	0	2C	0
46	H	7,8	66	adenocarcinoma	4	3	7	30	3.3	0	1	0	3B	0
47	H	9,10	55	adenocarcinoma	3	4	7	50	3.6	0	1	0	3B	0
48	H	11	non-neoplastic from C7,8											
49	I	1,2	64	adenocarcinoma	4	3	7	20	2.7	0	1	0	2C	0
50	I	3,4	60	adenocarcinoma	4	3	7	5	1.2	0	1	0	2C	0
51	I	5,6	58	adenocarcinoma	3	3	6	10	2.1	0	0	0	2C	0
52	I	7,8	70	adenocarcinoma	4	3	7	30	2.7	1	1	0	3B	0
53	I	9,10	70	adenocarcinoma	5	4	9	70	4.8	1	1	1	3B	0