

Specifications:

- No. of cases: 30
- Tissue type: Esophagus cancer tissues
- No. of spots: 4~10 spots from each cancer case (200 spots)
- Total spots: 200
- Corresponding normal tissues with cancers: Yes
- Diameter: 0.6 mm

Documents:

- Product specification: layout, summary of tissue spots
- H&E stained images
- Detailed pathological information

Layout:



Note :
 *The layout of tissue arrays can be slightly changed and the loss of spots (~5%) can occur depending on the slide.

*L9,10,11, 13 and L12,14,15,16 come from two different cases, respectively.

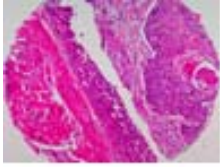
Summary of tissue spots

No	Coordinat	Sex	Age	Key word	Type	TNM Stage	Tumor size (cm)
1	A 1~4	m	60	squamous cell carcinoma	well	T1N0M0 (I)	4.5*2.5
2	A 5~8	m	60	non-neo plastic from A1~4			
3	A 9~14	m	77	squamous cell carcinoma	moderate	T3N0M0 (II A)	2.5*2.0
4	A 15~16	m	77	non-neo plastic from A9~14			
5	B 1~5	m	50	squamous cell carcinoma	well	T1N0M0 (I)	3.8*1.5
6	B 6~8	m	50	non-neo plastic from B1~5			
7	B 9~14	m	69	squamous cell carcinoma	moderate	T2N1M0 (II B)	3.5*2.3*1.4
8	B 15~16	m	69	non-neo plastic from B9~14			
9	C 1~5	m	69	squamous cell carcinoma	moderate	T1N0M0 (I)	2.0*1.5
10	C 6~8	m	69	non-neo plastic from C1~5			
11	C 9~12	m	68	squamous cell carcinoma	moderate	T2N0M0 (II A)	5.5*4.5
12	C 13~16	m	68	non-neo plastic from C9~12			
13	D 1~2	m	55	squamous cell carcinoma	moderate	T1N0M0 (I)	1.8*1.0
14	D 3~4	m	55	non-neo plastic from D1~2			
15	D 5~6	m	71	squamous cell carcinoma	moderate	T1N0M0 (I)	8.0*3.0
16	D 7~8	m	71	non-neo plastic from D5~6			
17	D 9~12	m	62	squamous cell carcinoma	moderate	T1N1M0 (II B)	4.0*3.5
18	D 13~16	m	62	non-neo plastic from D9~12			
19	E 1~4	m	68	squamous cell carcinoma		T1N0M0 (I)	1
20	E 5~8	m	68	non-neo plastic from E1~4			
21	E 9~12	m	71	squamous cell carcinoma	moderately to poorly	T3N0M0 (II A)	4.0*1.5
22	E 13~16	m	71	non-neo plastic from E9~12			
23	F 1~8	m	73	squamous cell carcinoma	poorly	T1N0M0 (I)	9.5
24	G 1~2	m	73	non-neo plastic from F1~8			
25	F 9~11	m	62	squamous cell carcinoma	poorly	T2N0M0 (II A)	2.0*1.3
26	F 12~16 G 9~10	m	62	non-neo plastic from F9~11			
27	H 1~6	m	67	squamous cell carcinoma	well	T1N1M0 (II B)	2.8*1.7
28	H 7~8	m	67	non-neo plastic from H1~6			
29	H 9~11	m	68	squamous cell carcinoma	moderately-well	T3N1M0 (III)	4.0*3.0
30	H 12	m	68	non-neo plastic from H9~11			
31	H 13~15	m	75	squamous cell carcinoma	moderate	T3N1M0 (III)	4.5*3.5
32	H 16	m	75	non-neo plastic from H13~15			
33	I 1~3			squamous cell carcinoma	moderate	T1N1M0 (II B)	1.7*1.0
34	I 4~8	m	54	non-neo plastic from I1~3			
35	I 9~11	m	61	squamous cell carcinoma	moderate	T3N1M0 (III)	7.0*2.7
36	I 12	m	61	non-neo plastic from I9~11			
37	I 13~15	m	60	squamous cell carcinoma	moderate	T4N0M0 (III)	3.0*2.0*1.0
38	I 16	m	60	non-neo plastic from I13~15			

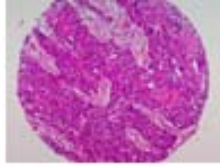
Summary of tissue spots

No	Coordinat	Sex	Age	Key word	Type	TNM Stage	Tumor size (cm)
39	J 1~5	m	57	squamous cell carcinoma	moderate	T2N1M0 (II B)	5.5*5.0
40	J 6~8	m	57	non-neo plastic from J1~5			
41	J 9~11	m	60	squamous cell carcinoma	moderate	T3N1M0 (III)	7.0*4.7
42	J 12	m	60	non-neo plastic from J9~11			
43	J 13~15	m	56	squamous cell carcinoma	poorly	T3N1M0 (III)	7.0*6.0
44	J 16	m	56	non-neo plastic from J13~15			
45	K 1~6	f	58	squamous cell carcinoma	moderate	T2N0M0 (II A)	4.5*2.5
46	K 7~8	f	58	non-neo plastic from K1~6			
47	K 9~11	m	59	squamous cell carcinoma carcinoma in situ	moderate	T3N1M1 (IV)	5.3*2.5
48	K 12	m	59	non-neo plastic from K9~11			
49	K 13~15	m	61	squamous cell carcinoma	moderate	T3N0M1a (IVA)	1.3*0.6
50	K 16	m	61	non-neo plastic from K13~15			
51	L 1~6	m	67	squamous cell carcinoma	moderate	T2N0M0 (II A)	2.3*1.3
52	L 7~8	m	67	non-neo plastic from L1~6			
53	L 9~11	m	56	squamous cell carcinoma	moderate	T1N0M1a (IVA)	3.0*3.0
54	L 13	m	56	non-neo plastic from L9~11			
55	L 12, 14~15	m	66	squamous cell carcinoma	poorly	T3N0M1a (IVA)	3.1*2.0
56	L 16	m	66	non-neo plastic from L13~15			
57	M 1~6	m	80	squamous cell carcinoma		T1N1M0 (II B)	5.0*4.8
58	N 1~2 M 7~8	m	80	non-neo plastic from M1~6			
59	M 9~16	m	58	squamous cell carcinoma	moderate	T2N1M1 (IV)	4.0*3.0*1.0
60	N 9~10	m	58	non-neo plastic from M9~16			

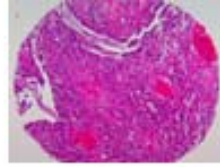
QC sheet_LOT#132120408301
Hematoxylin and Eosin staining



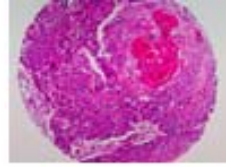
A1



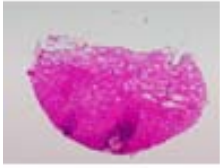
A2



A3



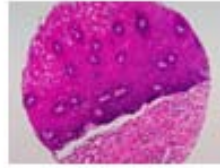
A4



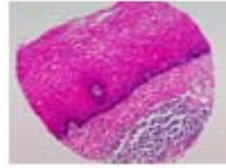
A5



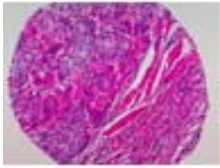
A6



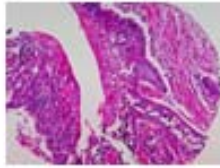
A7



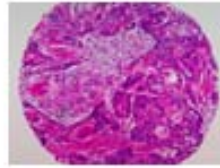
A8



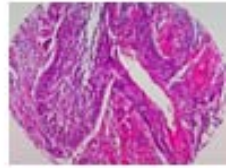
A9



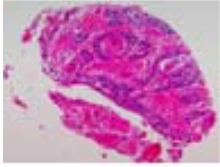
A10



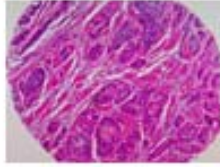
A11



A12



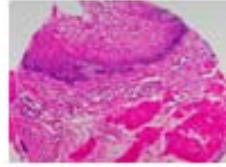
A13



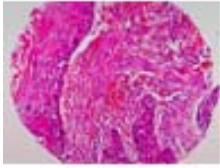
A14



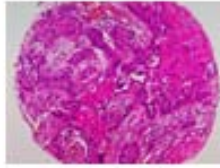
A15



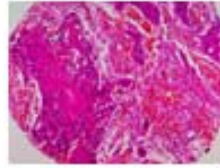
A16



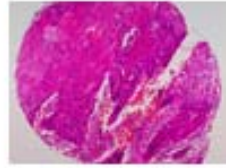
B1



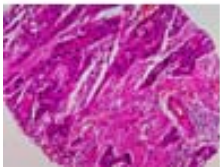
B2



B3



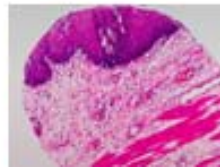
B4



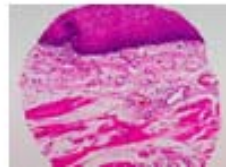
B5



B6

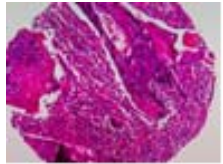


B7

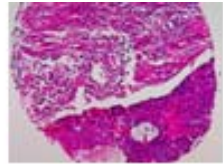


B8

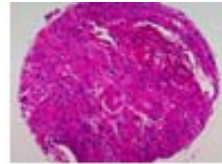
QC sheet_LOT#132120408301
Hematoxylin and Eosin staining



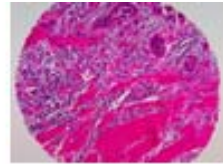
B9



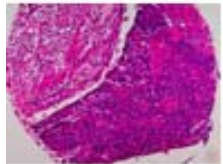
B10



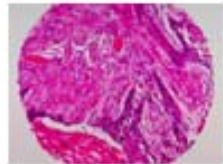
B11



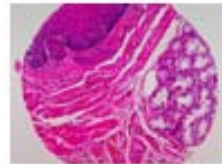
B12



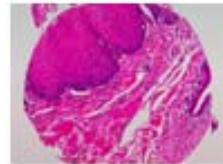
B13



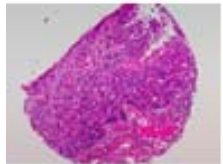
B14



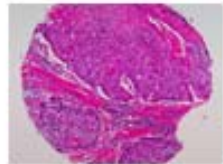
B15



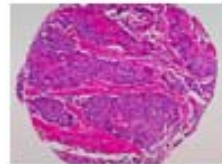
B16



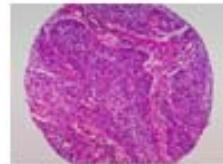
C1



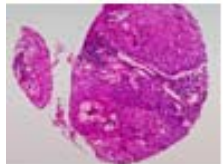
C2



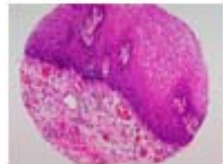
C3



C4



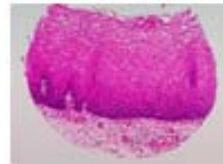
C5



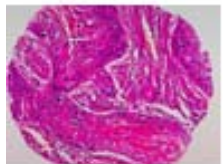
C6



C7



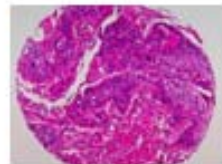
C8



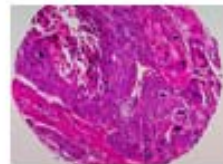
C9



C10



C11



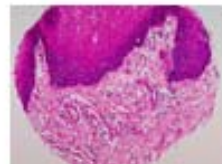
C12



C13



C14

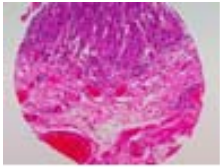


C15

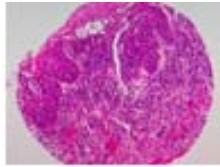


C16

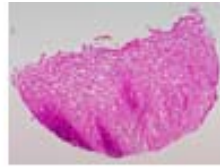
QC sheet_LOT#132120408301
Hematoxylin and Eosin staining



D1



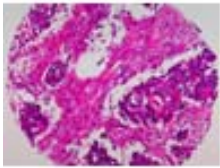
D2



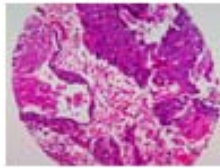
D3



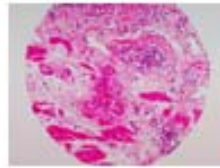
D4



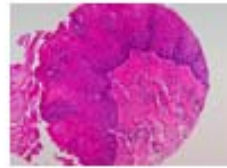
D5



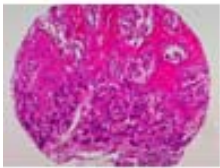
D6



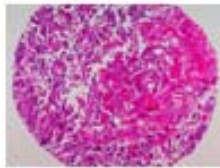
D7



D8



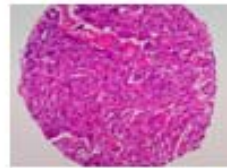
D9



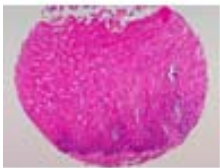
D10



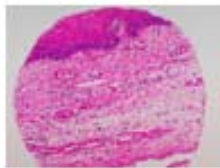
D11



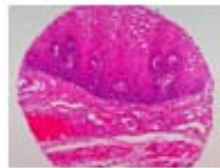
D12



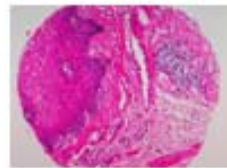
D13



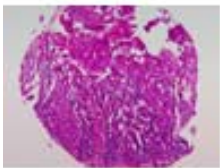
D14



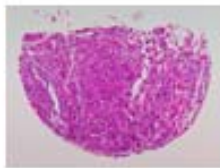
D15



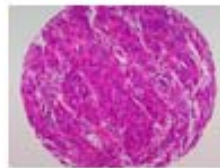
D16



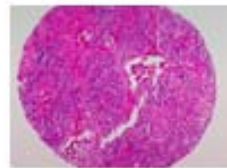
E1



E2



E3



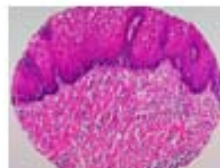
E4



E5



E6

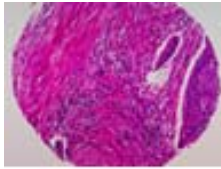


E7

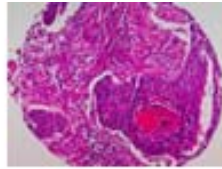


E8

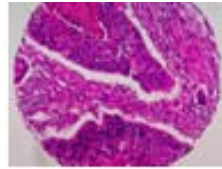
QC sheet_LOT#132120408301
Hematoxylin and Eosin staining



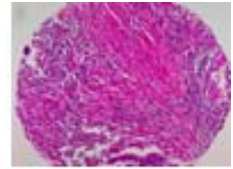
E9



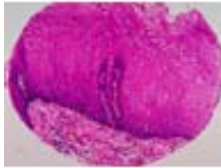
E10



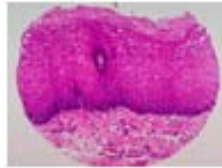
E11



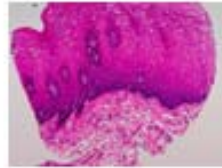
E12



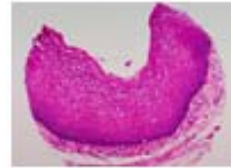
E13



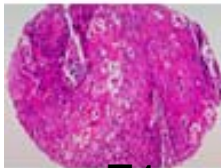
E14



E15



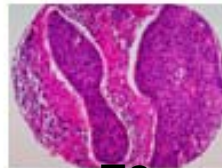
E16



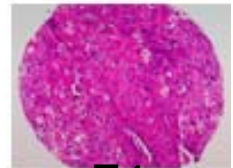
F1



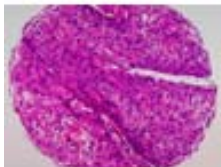
F2



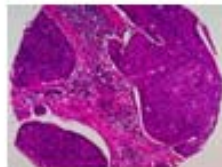
F3



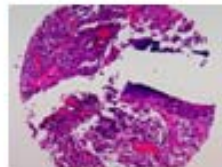
F4



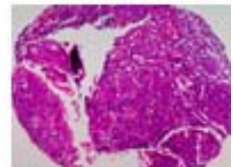
F5



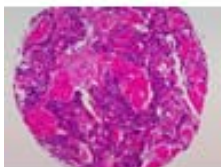
F6



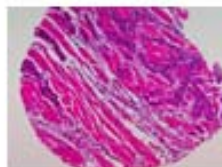
F7



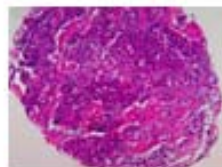
F8



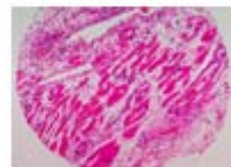
F9



F10



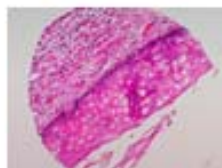
F11



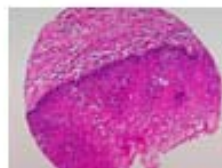
F12



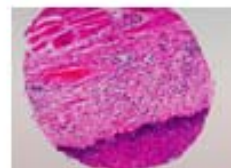
F13



F14

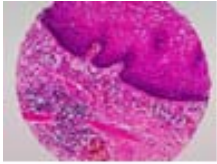


F15

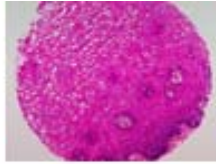


F16

QC sheet_LOT#132120408301
Hematoxylin and Eosin staining



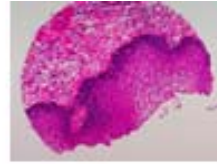
G1



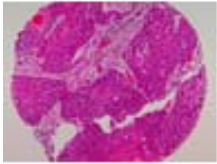
G2



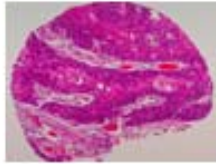
G9



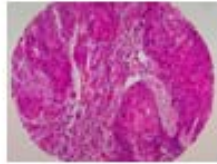
G10



H1



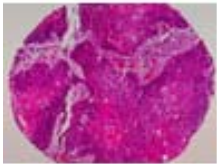
H2



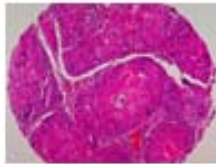
H3



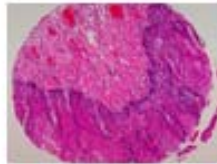
H4



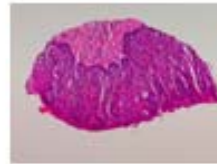
H5



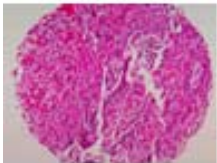
H6



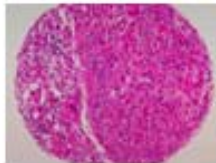
H7



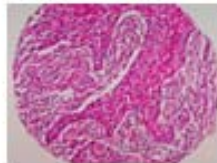
H8



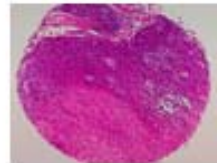
H9



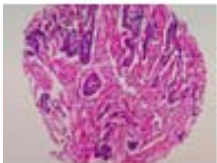
H10



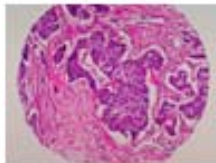
H11



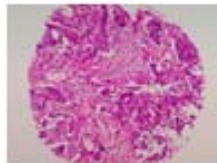
H12



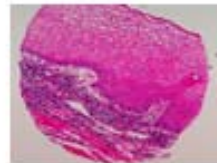
H13



H14



H15



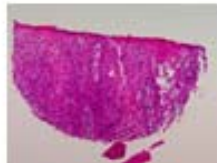
H16



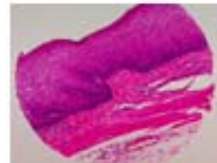
I1



I2

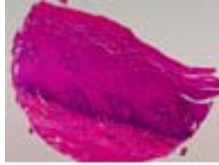


I3



I4

QC sheet_LOT#132120408301
Hematoxylin and Eosin staining



I5



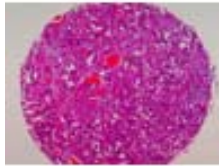
I6



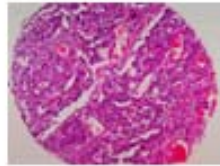
I7



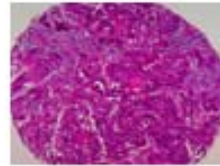
I8



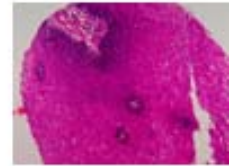
I9



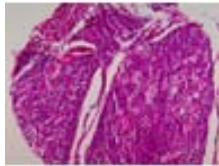
I10



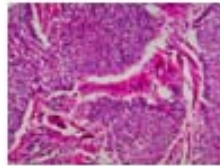
I11



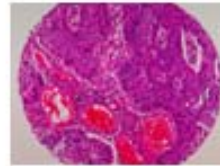
I12



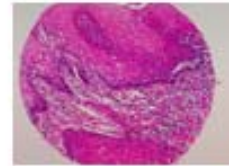
I13



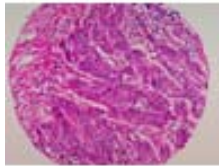
I14



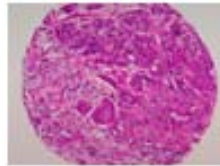
I15



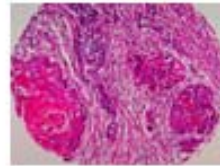
I16



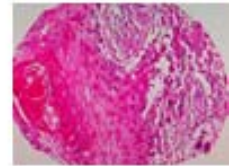
J1



J2



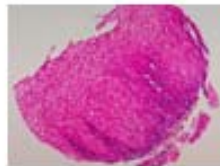
J3



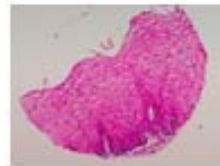
J4



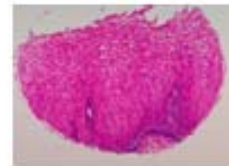
J5



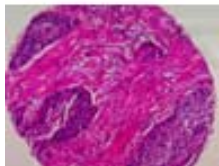
J6



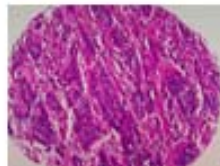
J7



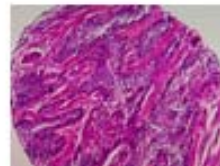
J8



J9



J10

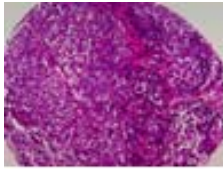


J11

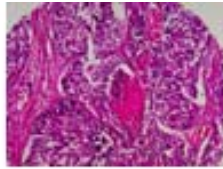


J12

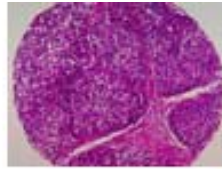
QC sheet_LOT#132120408301
Hematoxylin and Eosin staining



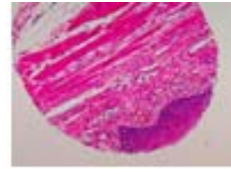
J13



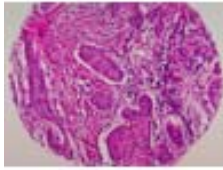
J14



J15



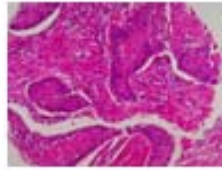
J16



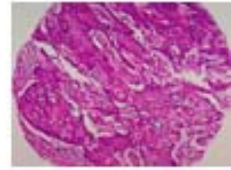
K1



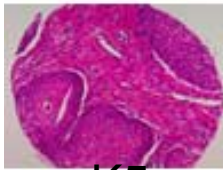
K2



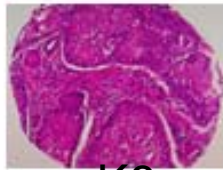
K3



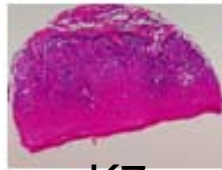
K4



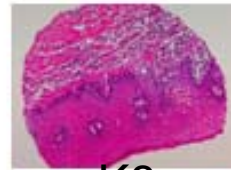
K5



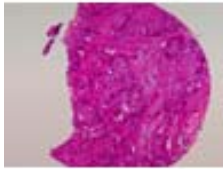
K6



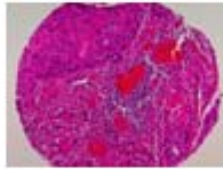
K7



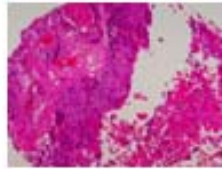
K8



K9



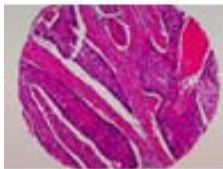
K10



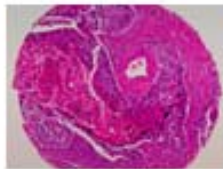
K11



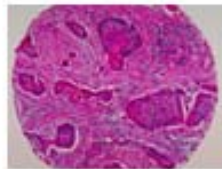
K12



K13



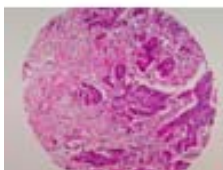
K14



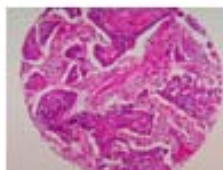
K15



K16



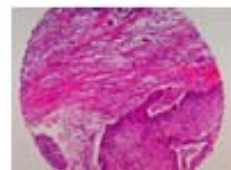
L1



L2

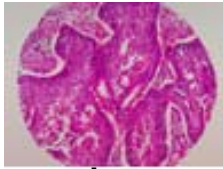


L3

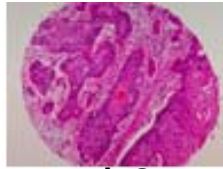


L4

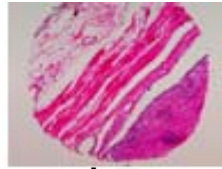
QC sheet_LOT#132120408301
Hematoxylin and Eosin staining



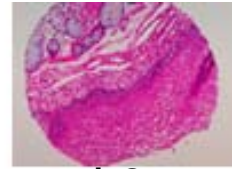
L5



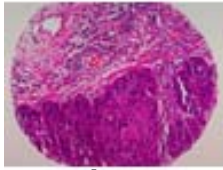
L6



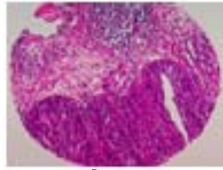
L7



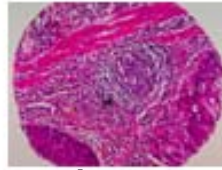
L8



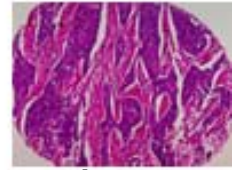
L9



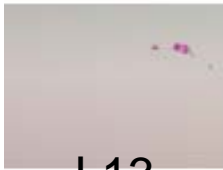
L10



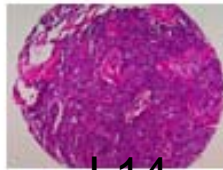
L11



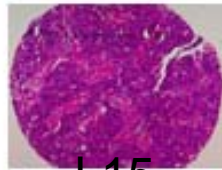
L12



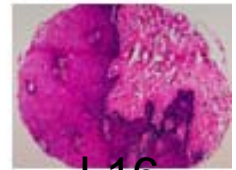
L13



L14



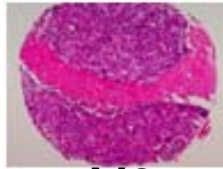
L15



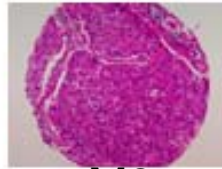
L16



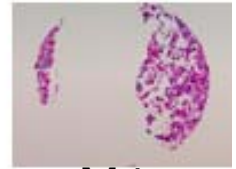
M1



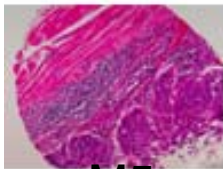
M2



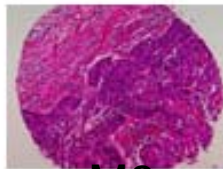
M3



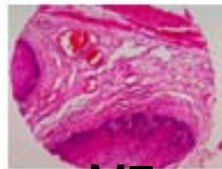
M4



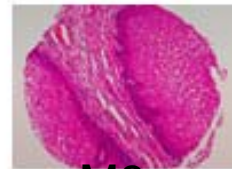
M5



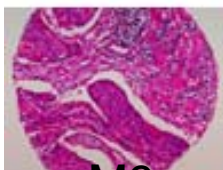
M6



M7



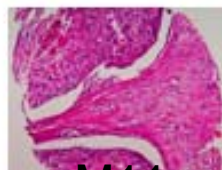
M8



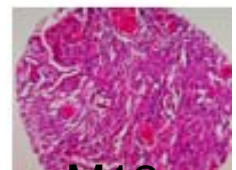
M9



M10



M11

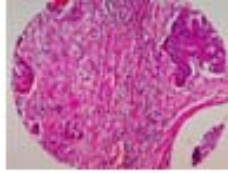


M12

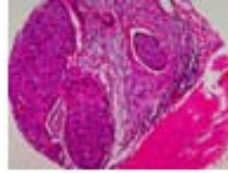
QC sheet_LOT#132120408301
Hematoxylin and Eosin staining



M13



M14



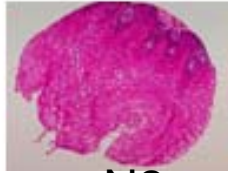
M15



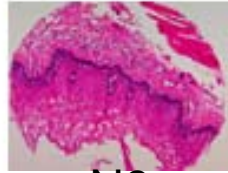
M16



N1



N2



N9



N10

A218(II) : Esophagus cancer tissues with corresponding normal tissues

No	Coordinat		Sex	Age	Key word	Histology Diagnosis	Type	TNM Stage	Tumor size (cm)
1	A	1~4	m	60	squamous cell carcinoma	Esophagus, esophagectomy: 1) fungating squamous cell carcinoma, well differentiated, with extension to the outer 1/3 of lamina propria No lymphovascular permeation 2) resection margins, proximal and distal : free of tumor 3) regional lymph nodes : free of tumor(0/1)	well	T1N0M0 (I)	4.5*2.5
2	A	5~8	m	60	non-neo plastic	non-neo plastic from A1~4			
3	A	9~14	m	77	squamous cell carcinoma	Esophagus, esophagectomy: 1) squamous cell carcinoma, moderately differentiatd with extension through proper muscle to the adventitia(T3) 2) leiomyoma, small 3) resection margins, proximal and distal: free of tumor 4) lymph nodes, paraesophageal(0/6) and regional(0/1):(0/7): free of tumor	moderate	T3N0M0 (II A)	2.5*2.0
4	A	15~16	m	77	non-neo plastic	non-neo plastic from A9~14			
5	B	1~5	m	50	squamous cell carcinoma	Esophagus, esophagectomy: 1) squamous cell carcinoma, well-differentiated, fungating type, extending into submucosa without proper muscle involvement 2) resection margins, proximal and distal: free of tumor 3) regional lymph node(0/4): free of tumor	well	T1N0M0 (I)	3.8*1.5
6	B	6~8	m	50	non-neo plastic	non-neo plastic from B1~5			

A218(II) : Esophagus cancer tissues with corresponding normal tissues

No	Coordinat		Sex	Age	Key word	Histology Diagnosis	Type	TNM Stage	Tumor size (cm)
7	B	9~14	m	69	squamous cell carcinoma	Esophagus, esophagectomy: polypoid squamous cell carcinoma, moderately differentiated with 1) size: 3.5x2.3x1.4cm. 2) infiltrative growth. 3) extension to inner muscle layer. 4) frequent lymphovascular invasion. 5) intramucosal metastasis. 6) intact proximal(esophagus) and distal(stomach) resection margins. 7) metastasis to regional lymph nodes(6/14:periesophageal(3/4), and celiac(3/10)).	moderate	T2N1M0 (II B)	3.5*2.3*1.4
8	B	15~16	m	69	non-neo plastic	non-neo plastic from B9~14			
9	C	1~5	m	69	squamous cell carcinoma	Esophagus, esophagectomy: 1) squamous cell carcinoma, moderately differentiated with I) Fungating gross type II) Extension to lamina propria and submucosa III) Occasional lymphatic permeation 2) acanthosis glycogenosis, multiple 3) resection margin, proximal and distal: free of tumor 4) lymph node, subcarinal(0/10): free of tumor	moderate	T1N0M0 (I)	2.0*1.5
10	C	6~8	m	69	non-neo plastic	non-neo plastic from C1~5			

A218(II) : Esophagus cancer tissues with corresponding normal tissues

No	Coordinat	Sex	Age	Key word	Histology Diagnosis	Type	TNM Stage	Tumor size (cm)	
11	C	9~12	m	68	squamous cell carcinoma	Esophagus and stomach, Sweet's operation: 1) squamous cell carcinoma, moderately differentiated, I) arising from the gastroesophageal junction and extension to the esophagus and cardia of stomach II) fungating type III) size: 5.5x4.5cm IV) extension to the subadventitial and subserosal soft tissue (T2, no adventitia involvement) V) scant lymphovascular permeation 2) separate mass of esophagus: Squamous cell carcinoma, confined the mucosa and muscularis mucosa 3. section margins, proximal and distal: free of tumor 4. regional lymph nodes: free of tumor in all nodes (0/30), in detail, celiac(0/2), left cardiac(0/11), greater curvature(0/0), #1(0/14), #2(0/3)	moderate	T2N0M0 (II A)	5.5*4.5
12	C	13~16	m	68	non-neo plastic	non-neo plastic from C9~12			
13	D	1~2	m	55	squamous cell carcinoma	Esophagus, esophagectomy: 1) squamous cell carcinoma(superficial carcinoma), moderately differentiated with I) extension to the lamina propria(mucosa) II) infiltrative gross type 2) resection margin, proximal and distal: free of tumor 3) lymph nodes, labelled as paraesophageal(0/3), No.7(0/2), omental (0/7):(0/12): free of tumor	moderate	T1N0M0 (I)	1.8*1.0
14	D	3~4	m	55	non-neo plastic	non-neo plastic from D1~2			

A218(II) : Esophagus cancer tissues with corresponding normal tissues

No	Coordinat		Sex	Age	Key word	Histology Diagnosis	Type	TNM Stage	Tumor size (cm)
15	D	5~6	m	71	squamous cell carcinoma	Esophagus, esophagectomy: ulcerofungating squamous cell carcinoma, moderately differentiated, with 1) Size: 8x3cm 2) infiltrative growth 3) extension to 2/3 of submucosal space 4) no vascular and perineural invasion 5) intact proximal and distal resection margins 6) no metastasis to regional lymph nodes (celiac(0/2), periesophageal(0/7)) 7) gastrointestinal stromal tumor, benign, in upper body of stomach.	moderate	T1N0M0 (I)	8.0*3.0
16	D	7~8	m	71	non-neo plastic	non-neo plastic from D7~8			
17	D	9~12	m	62	squamous cell carcinoma	Esophagus, Sweet operation: ulcerofungating squamous cell carcinoma, moderately differentiated, 1) size:4x3.5cm 2) extension to the submucosa 3) lymphovascular permeation: unceratin 4) resection margin, proximal, esophageal: free of tumor 5) resection margin, distal, gastric: free of tumor 6) Regional lymph nodes: tumor metastasis to 1 out of 3(1/3), in detail, celiac node(0/2), lower paraesophageal node(1/1)	moderate	T1N1M0 (II B)	4.0*3.5
18	D	13~16	m	62	non-neo plastic	non-neo plastic from D9~12			
19	E	1~4	m	68	squamous cell carcinoma	Esophagus, esophagectomy: 1) squamous cell carcinoma, multiple with I) infiltrative gross type II) extension to the lamina propria and submucosa III) no lymphatic permeation IV) multifocal area of epithelial dysplasia, low to high grade 2) glycogenic acanthosis 3) resection margin: free of tumor		T1N0M0 (I)	1

A218(II) : Esophagus cancer tissues with corresponding normal tissues

No	Coordinat	Sex	Age	Key word	Histology Diagnosis	Type	TNM Stage	Tumor size (cm)	
20	E	5~8	m	68	non-neo plastic	non-neo plastic from E1~4			
21	E	9~12	m	71	squamous cell carcinoma	Esophagus, esophagectomy: 1) invasive squamous cell carcinoma, moderately to poorly differentiated, ulcerative, with penetration of entire wall and extension to the underlying resection margin and occasional lymphatic invasion 2) leiomyomatosis 3) resection margins, proximal and distal: free of tumor 4) lymph nodes(0/2): free of tumor metastasis in 2 nodes	moderately to poorly	T3N0M0 (II A)	4.0*1.5
22	E	13~16	m	71	non-neo plastic	non-neo plastic from E9~12			
23	F	1~8	m	73	squamous cell carcinoma	Esophagus, segmental resection: Ulcerofungating squamous cell carcinoma, poorly differentiated, with spindle cell and focal neuroendocrine differentiation with 1) size: about 9cm in the largest dimension along the longitudinal axis 2) infiltrative growth 3) invasion to submucosal space 4) vascular invasion 5) resection margins, proximal and distal: free of tumor. 6) lymph nodes, paraesophageal(0/3) and No.1(0/2): free of tumor metastasis in all 5 nodes.	poorly	T1N0M0 (I)	9.5
24	G	1~2	m	73	non-neo plastic	non-neo plastic from F1~8			
25	F	9~11	m	62	squamous cell carcinoma	Esophags, esophagectomy: 1) squamous cell carcinoma, poorly differentiated, ulceroinfiltrative, extending into muscularis propria without penetration 2) resection margins, proximal and distal: free of tumor 3) lymph node, regional(0/1), paraesophageal(0/4):(0/5): free of	poorly	T2N0M0 (II A)	2.0*1.3
26	F G	12~16 9~10	m	62	non-neo plastic	non-neo plastic from F9~11			

A218(II) : Esophagus cancer tissues with corresponding normal tissues

No	Coordinat		Sex	Age	Key word	Histology Diagnosis	Type	TNM Stage	Tumor size (cm)
27	H	1~6	m	67	squamous cell carcinoma	Esophagus, segmental resection: 1) Squamous cell carcinoma, well differentiated with extension to submucosa 2) benign stromal tumor, gastroesophageal junction 3) resection margin : free of tumor. 4) lymph node, regional : metastatic squamous cell carcinoma in one out of 12.(paraesophageal (0/1), inferior pulmonary(0/1), subscapular(0/3), perigastric(1/7))	well	T1N1M0 (II B)	2.8*1.7
28	H	7~8	m	67	non-neo plastic	non-neo plastic from H1~6			
29	H	9~11	m	68	squamous cell carcinoma	Esophagus and stomach, esophagectomy and gastrectomy: 1) moderately/well differentiated squamous cell carcinoma with full thickness involvement of the esophageal wall, see note. 2) regional lymph nodes, N1(0/3), N2(1/3):(1/6): Metastatic squamous cell carcinoma in a lymph node, with extranodal extension, out of six lymph nodes 3) lymph nodes, labelled as "inferior pulmonary ligamental"(0/1) and labelled as "paratracheal"(0/5): pneumoconiotic nodules without involvement of tumor 4) resection margins, proximal(esophagus): free of tumor 5) resection margins, distal(jejunum): free of tumor 6) specimen, labelled as "mediastinal pleural nodule": Metastatic squamous cell carcinoma a lymph node with extranodal extension Note: The stomach and the gastrojejunostomy site do not show any residual neoplasm.	moderately well	T3N1M0 (III)	4.0*3.0
30	H	12	m	68	non-neo plastic	non-neo plastic from H9~11			

A218(II) : Esophagus cancer tissues with corresponding normal tissues

No	Coordinat	Sex	Age	Key word	Histology Diagnosis	Type	TNM Stage	Tumor size (cm)	
31	H	13~15	m	75	<p>esophagus squamous cell carcinoma stomach adenocarcinom a stomach signet ring cell carcinoma stomach tubular adenoma</p>	<p>1. Esophagus, total esophagectomy: squamous cell carcinoma, moderately differentiated, with 1) ulceroinfiltrative gross type 2) extension to adventitia 3) occasional lymphatic permeation 4) presence of squamous cell carcinoma in situ in adjacent esophageal mucosa 2. Stomach, total gastrectomy: 1) adenocarcinoma, moderately differentiated I) ulceroinfiltrative gross type II) mixed with signet ring cell carcinoma III) with focal areas of extracellular mucin production IV) with extension to proper muscle laye. V) frequent lymphatic permeation. 2)two tubular adenomas with low grade dysplasia. 3) esophagus, proximal resection margin: focal dysplasia. 4) duodenum, distal resection margin: free of tumor. 5) regional lymph nodes, No.1(1/5), No.2(0/1), mediastinal(0/2):(1/8): metastatic squamous cell carcinoma in one out of 8 lymph nodes 6) regional lymph node, No.3(1/8), No.4(0/0), No.5(1/1), No.6(5/6), No.7(0/3), No.9(0/8):(7/26): metastatic adenocarcinoma in 7 out of 26 lymph nodes</p>	moderate	T3N1M0 (III)	4.5*3.5
32	H	16	m	75	non-neo plastic	non-neo plastic from H13~15			

A218(II) : Esophagus cancer tissues with corresponding normal tissues

No	Coordinat	Sex	Age	Key word	Histology Diagnosis	Type	TNM Stage	Tumor size (cm)
33	I 1~3	m	48	squamous cell carcinoma dysplasia	Esophagus, esophagogastrectomy: 1) squamous cell carcinoma, moderately differentiated, multifocal with extension to the submucosa and occasional lymphatic permeation 2) multifocal epithelial dysplasia with in situ squamous cell carcinoma 3) resection margins, proximal and distal: free of tumor 4) regional lymph nodes(1/21): metastatic squamous cell carcinoma in 1 out of 21 nodes	moderate	T1N1M0 (II B)	1.7*1.0
34	I 4~8	m	54	non-neo plastic	non-neo plastic from I1~3			
35	I 9~11	m	61	squamous cell carcinoma	Esophagus, esophagectomy: ulcerofungating squamous cell carcinoma, moderately differentiated, 1) extension to the serosa (adventitia), not exposed to the mediastinum 2) size: 7x2.7cm 3) lymphovascular permeation: positive 4) resection margin, proximal, esophageal: free of tumor 5) resection margin, distal, gastric: free of tumor 6) regional lymph nodes: tumor metastasis to 2 out of 32(2/32), in detail, paraesophageal(0/3), celiac(0/1), hilar(0/2), regional (2/26)	moderate	T3N1M0 (III)	7.0*2.7
36	I 12	m	61	non-neo plastic	non-neo plastic from I9~11			

A218(II) : Esophagus cancer tissues with corresponding normal tissues

No	Coordinat	Sex	Age	Key word	Histology Diagnosis	Type	TNM Stage	Tumor size (cm)	
37	I	13~15	m	60	squamous cell carcinoma	Esophagus, esophagectomy: squamous cell carcinoma, moderately differentiated, probably recurred, see note with 1) size: 2.5x2cm. 2) infiltrative growth. 3) transmural involvement from mucosa to subserosal space 4) intact proximal and distal(stomach) resection margins but very close to deep margin. 5) metastasis to 2 out of 33 regional lymph nodes (paraesophageal(0/6), right hilar(0/5), greater curvature (0/1), celiac(2/7), AP window(0/5), regional(0/9)). 6) chronic granulomatous inflammation with necrosis, consistent with tuberculosis, in paraesophageal and AP window lymph nodes. Note: The tumor was predominantly located in submucosal space without evidence of tumor occurring from the mucosa. Therefore, it could be recurred tumor of laryngeal carcinoma rather than primary esophageal carcinoma.	moderate	T4N0M0 (III)	3.0*2.0*1.0
38	I	16	m	60	non-neo plastic	non-neo plastic from I13~15			
39	J	1~5	m	57	squamous cell carcinoma	Esophagus, esophagectomy: 1) Squamous cell carcinoma, moderately differentiated with I) ulcerative gross type II) extension to the adventitia III) no lymphovascular invasion IV) foreign body reaction to keratinous material and abscess formation around tumor 2) resection margin, proximal and distal: free of tumor 3) lymph nodes, esophageal(0/3), hilar(0/1), subcrainal(0/6), No.7(3/6) paratracheal(0/1):(3/21): metastatic carcinoma in 3 out of 21 lymph nodes	moderate	T2N1M0 (II B)	5.5*5.0
40	J	6~8	m	57	non-neo plastic	non-neo plastic from J1~5			

A218(II) : Esophagus cancer tissues with corresponding normal tissues

No	Coordinat		Sex	Age	Key word	Histology Diagnosis	Type	TNM Stage	Tumor size (cm)
41	J	9~11	m	60	squamous cell carcinoma leiomyoma	Esophagus, resection: fungating squamous cell carcinoma, moderately differentiated, 1) size: 7x4.7cm 2) extension to the subserosa(no serosa involved) 3) lymphovascular permeation, present 4) separate mass: Leiomyoma, submucosal 5) resection margin, proximal, esophageal: free of tumor 6) resection margin, distal, gastric: free of tumor 7) regional lymph nodes: tumor metastasis to 2 out of 12 lymph nodes in detail, celiac(0/4),paraesophageal(1/3), regional(1/5)	moderate	T3N1M0 (III)	7.0*4.7
42	J	12	m	60	non-neo plastic	non-neo plastic from J9~11			
43	J	13~15	m	56	squamous cell carcinoma	Esophagus, esophagectomy: 1) squamous cell carcinoma, poorly differentiated with extension to the adventitia(T3) 2) resection margins, proximal and distal: free of tumor. 3) lymph nodes, labelled as greater curvature(0/1), paraesophageal(0/3), IPL(1/9) and regional(0/15):(1/28): metastatic carcinoma in 1 out of 28 lymph nodes Note: Immunohistochemical staining results: NSE, Synaptophysin, Chromogranin, CD56: Negative	poorly	T3N1M0 (III)	7.0*6.0
44	J	16	m	56	non-neo plastic	non-neo plastic from J13~15			
45	K	1~6	f	58	squamous cell carcinoma	Esophagus, esophagectomy: 1) squamous cell carcinoma, moderately differentiated with extension to the proper muscle 2) resection margins, proximal and distal: free of tumor 3) lymph node, regional(0/1): free of tumor	moderate	T2N0M0 (II A)	4.5*2.5
46	K	7~8	f	58	non-neo plastic	non-neo plastic from K1~6			

A218(II) : Esophagus cancer tissues with corresponding normal tissues

No	Coordinat		Sex	Age	Key word	Histology Diagnosis	Type	TNM Stage	Tumor size (cm)
47	K	9~11	m	59	squamous cell carcinoma carcinoma in situ	Esophagus, resection: 1) squamous cell carcinoma, moderately differentiated with I) fungating gross type. II) extension to the adventitia with penetration (involving lateral resection margin) III) A few lymphatic invasion 2) carcinoma in situ in the adjacent mucosa 3) resection margin, proximal: presence of carcinoma in the lymphatics 4) resection margin, distal: free of tumor 5) resection margin, lateral: extension of tumor 6) lymph nodes, subcarinal node(0/7), paraesophageal node(0/2), paratracheal node(1/1), perigastric node(0/8):(1/18): metastasis in 1 out of 18 lymph nodes 7) fibroadipose tissue labelled as distal resection margin: free of tumor	moderate	T3N1M1 (IV)	5.3*2.5
48	K	12	m	59	non-neo plastic	non-neo plastic from K9~11			
49	K	13~15	m	61	squamous cell carcinoma	Esophagus, lower, esophagectomy: 1) ulcerative squamous cell carcinoma, moderately differentiated, with I) extension to the periesophageal fat tissue II) lateral margin: free of tumor III) lymphovascular permeation: positive 2) resection margin, proximal, esophageal: free of tumor 3) resection margin, distal, gastric: free of tumor 4) regional lymph nodes: Tumor metastasis to 3 out of 10(3/10), in detail, gastric node(0/1), paraesophageal(0/6), celiac(3/3)	moderate	T3N0M1a (IVA)	1.3*0.6
50	K	16	m	61	non-neo plastic	non-neo plastic from K13~15			

A218(II) : Esophagus cancer tissues with corresponding normal tissues

No	Coordinat		Sex	Age	Key word	Histology Diagnosis	Type	TNM Stage	Tumor size (cm)
51	L	1~6	m	67	squamous cell carcinoma	Esophagus, esophagectomy: 1) squamous cell carcinoma, moderately differentiated with extension to muscularis propria and occasional lymphatic permeation 2) resection margins, proximal and distal: free of tumor 3) regional lymph nodes, No.1(0/2), No.2(0/4):(0/6): free of	moderate	T2N0M0 (II A)	2.3*1.3
52	L	7~8	m	67	non-neo plastic	non-neo plastic from L1~6			
53	L	9~11	m	56	squamous cell carcinoma	1.Esophagus, segmental resection: superficial squamous cell carcinoma, moderately differentiated with 1) size: 3.0x3.0cm approximately 2) superficial spreading growth with focal invasion to submucosal space 3) vascular invasion 4) intact proximal(esophagus) and distal(stomach) resection margins 5) metastasis to 1 out of 14 celiac lymph nodes 2.Stomach: Consistent with Helicobacter pylori gastritis with multifocal atrophy with intestinal metaplasia	moderate	T1N0M1a (IVA)	3.0*3.0
54	L	13	m	56	non-neo plastic	non-neo plastic from L9~11			
55	L	12, 14~15	m	66	squamous cell carcinoma	Esophagus and lymph node, esophagectomy with lymph node dissection: ulcerofungating squamous cell carcinoma, poorly differentiated, with 1) extension to the adventitia(not exposed to the mediastinum) 2) size: 3.1x2cm 3) lymphovascular permeation: scant 4) resection margin, proximal, esophageal: free of tumor. 5) resection margin, distal, stomach: free of tumor. 6) regional lymph nodes: tumor metastasis to 2 out of 3(2/3), in detail, lower paraesophageal(0/1), celiac(2/2).	poorly	T3N0M1a (IVA)	3.1*2.0
56	L	16	m	66	non-neo plastic	non-neo plastic from L13~15			

A218(II) : Esophagus cancer tissues with corresponding normal tissues

No	Coordinat	Sex	Age	Key word	Histology Diagnosis	Type	TNM Stage	Tumor size (cm)
57	M 1~6	m	80	squamous cell carcinoma	<p>1. Esophagus, resection:</p> <p>1) squamous cell carcinoma with focally glandular differentiation (adenosquamous carcinoma), confined to the submucosa but frequent lymphovascular permeation</p> <p>2) resection margins, proximal and distal: free of tumor</p> <p>3) regional lymph nodes, regional(1/1), No.2(0/0), No.3(0/0), No.7(0/1), No.8(0/0), No.11(0/4): metastatic squamous cell carcinoma in 1 out of 6 nodes</p> <p>2. Lung, wedge resection: bullae</p>		T1N1M0 (II B)	5.0*4.8
58	N 1~2 M 7~8	m	80	non-neo plastic	non-neo plastic from M1~8			
59	M 9~16	m	58	squamous cell carcinoma	<p>Esophagus and stomach, total esophagectomy:</p> <p>fungating squamous cell carcinoma, moderately differentiated, with</p> <p>1) Size: 4x3x1cm</p> <p>2) Infiltrative growth pattern</p> <p>3) penetration of proper muscle layer and extension to adventitia</p> <p>4) frequent vascular and neural invasion</p> <p>5) intact resection margins including proximal(esophagus), distal(stomach) and deep margin, see note.</p> <p>6) no lymph node metastasis (subcarinial(0/2), paraaortic ascending(0/2), hilar(0/15), perigastric(0/1) andomentum(0/0))</p> <p>Note: The tumor is so close to deep resection margin(less than</p>	moderate	T2N1M1 (IV)	4.0*3.0*1.0
60	N 9~10	m	58	non-neo plastic	non-neo plastic from M9~16			