

(formalin fixed)

For research use only

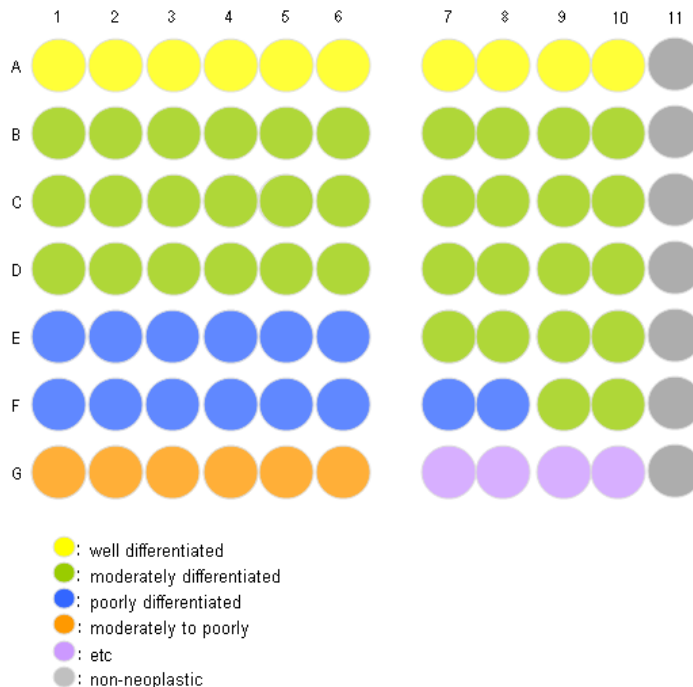
Specifications:

- No. of cases: 40
- Tissue type: Esophagus cancer tissues
- No. of spots: 2 spots from each cancer case (80 spots)
8 non-neoplastic spots (8 spots)
- Total spots: 88
- Corresponding normal tissues with cancers: Yes
- Diameter: 1.0 mm

Documents:

- Product specification: layout, summary of tissue spots
- H&E stained images
- Detailed pathological information

Layout:



(formalin fixed)

For research use only

Summary of tissue spots

No	Coordinate	Sex	Age	Keyword	TNM	
1	A	1,2	m	58	Squamous cell carcinoma	T3N1M0 (III)
2		3,4	m	61	Squamous cell carcinoma	T1N1M0 (II B)
3		5,6	m	65	Squamous cell carcinoma	T1N0M0 (I)
4		7,8	m	59	Squamous cell carcinoma	T1N0M0 (I)
5		9,10	m	49	Squamous cell carcinoma	T1N0M0 (I)
6		11	m	61	Non-neoplastic from A3,4	
7	B	1,2	m	74	Squamous cell carcinoma	T3N1M0 (III)
8		3,4	m	53	Squamous cell carcinoma	T3N1M1 (IV)
9		5,6	m	53	Squamous cell carcinoma	
10		7,8	m	63	Squamous cell carcinoma	T1N0M0 (I)
11		9,10	m	65	Squamous cell carcinoma	
12		11	m	67	Non-neoplastic from E5,6	
13	C	1,2	m	67	Squamous cell carcinoma	T3N1M0 (III)
14		3,4	m	59	Squamous cell carcinoma	T4N0M0 (III)
15		5,6	m	53	Squamous cell carcinoma	T2N1M0 (II B)
16		7,8	m	55	Squamous cell carcinoma	T2N1M1 (IV)
17		9,10	m	72	Squamous cell carcinoma	T3N1M0 (III)
18		11	m	68	Non-neoplastic from D9,10	
19	D	1,2	f	62	Squamous cell carcinoma	T3N0M0 (II A)
20		3,4	f	56	Squamous cell carcinoma	T2N0M0 (II A)
21		5,6	m	66	Squamous cell carcinoma	T2N0M0 (II A)
22		7,8	m	76	Squamous cell carcinoma	T3N0M0 (II A)
23		9,10	m	68	Squamous cell carcinoma	T2N1M0 (II B)
24		11	m	49	Non-neoplastic from A9,10	
25	E	1,2	m	60	Squamous cell carcinoma	T3N0M1a (IVA)
26		3,4	m	55	Squamous cell carcinoma	T1N0M1a (IVA)
27		5,6	m	67	Squamous cell carcinoma	T2N0M0 (II A)
28		7,8	m	61	Squamous cell carcinoma	T3N1M0 (III)
29		9,10	m	60	Squamous cell carcinoma	T4N0M0 (III)
30		11	m	53	Non-neoplastic from C5,6	
31	F	1,2	m	71	Squamous cell carcinoma	T1N0M0 (I)
32		3,4	m	61	Squamous cell carcinoma	T1N0M0 (I)
33		5,6	m	62	Squamous cell carcinoma	T1N1M0 (II B)
34		7,8	m	62	Squamous cell carcinoma	T3N1M0 (III)
35		9,10	m	67	Squamous cell carcinoma	
36		11	f	62	Non-neoplastic from D1,2	

(formalin fixed)

For research use only

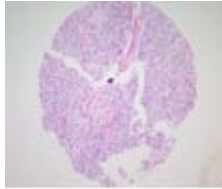
Summary of tissue spots

No	Coordinate	Sex	Age	Keyword	TNM	
37	G	1,2	m	66	Squamous cell carcinoma	T3N0M1a (IV A)
38		3,4	m	57	Squamous cell carcinoma	
39		5,6	m	56	Squamous cell carcinoma	T3N1M0 (III)
40		7,8	m	67	Squamous cell carcinoma	
41		9,10	f	70	Squamous cell carcinoma	
42		11	m	70	Non-neoplastic from H5,6	
43	H	1,2	m	61	Squamous cell carcinoma	T1N0M1 (IV)
44		3,4	m	64	Squamous cell carcinoma	T3N1M0 (III)
45		5,6	m	70	Squamous cell carcinoma	T3N0M0 (II A)
46		7,8	m	74	Squamous cell carcinoma	T1N1M0 (II B)
47		9,10	m	64	Squamous cell carcinoma	
48		11	m	61	Non-neoplastic from F3,4	

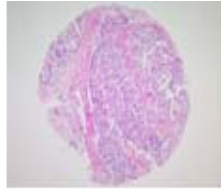
(formalin fixed)

For research use only

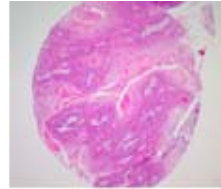
QC sheet_LOT#122120505261
Hematoxylin and Eosin staining



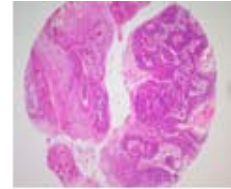
A1



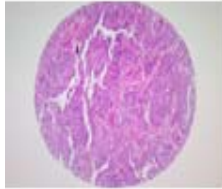
A2



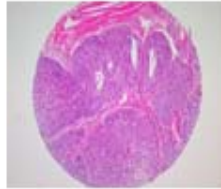
A3



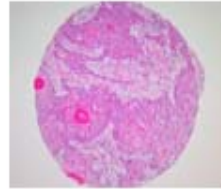
A4



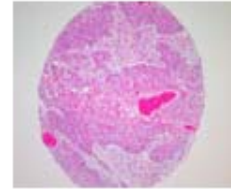
A5



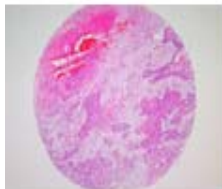
A6



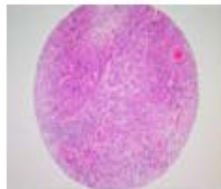
A7



A8



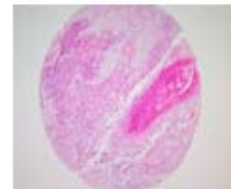
A9



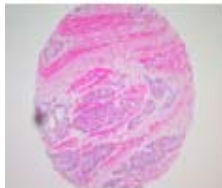
A10



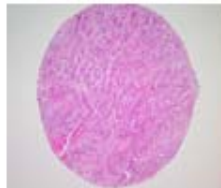
A11



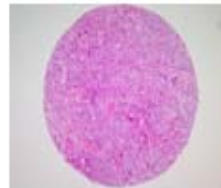
B1



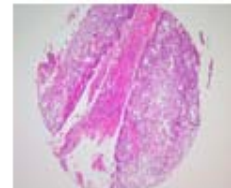
B2



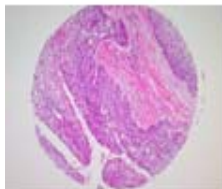
B3



B4



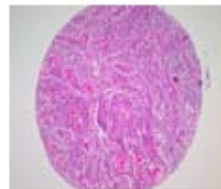
B5



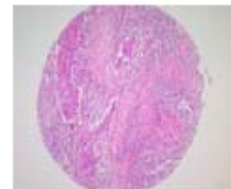
B6



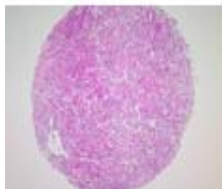
B7



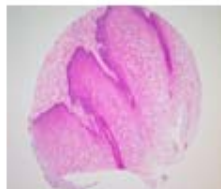
B8



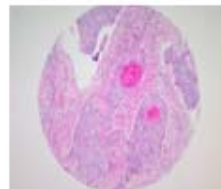
B9



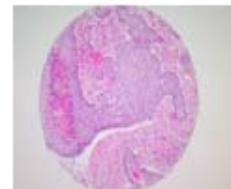
B10



B11



C1

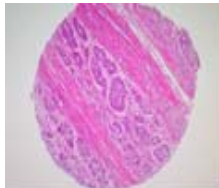


C2

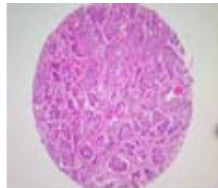
(formalin fixed)

For research use only

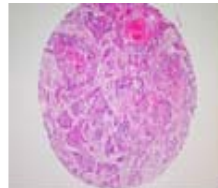
QC sheet_LOT#122120505261
Hematoxylin and Eosin staining



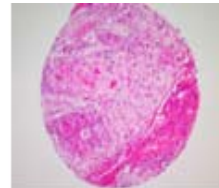
C3



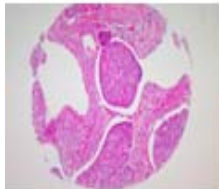
C4



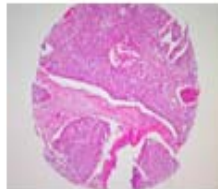
C5



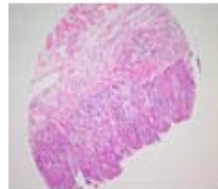
C6



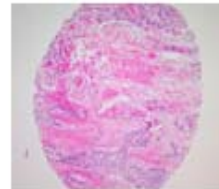
C7



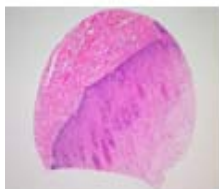
C8



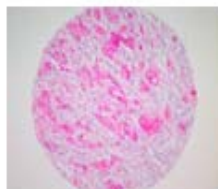
C9



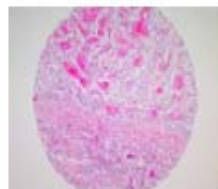
C10



C11



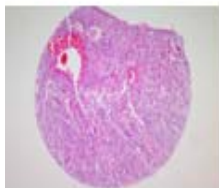
D1



D2



D3



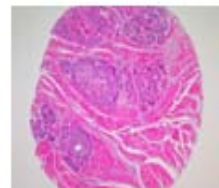
D4



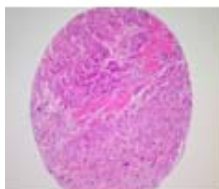
D5



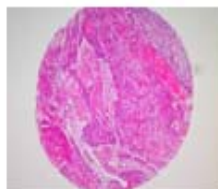
D6



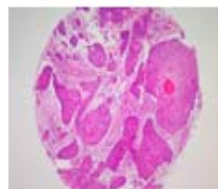
D7



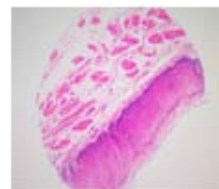
D8



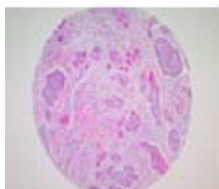
D9



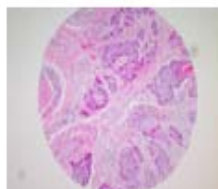
D10



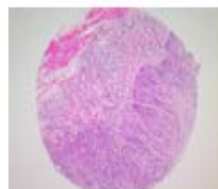
D11



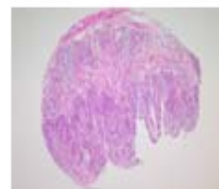
E1



E2



E3

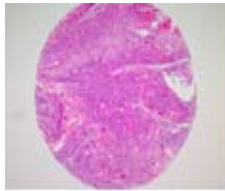


E4

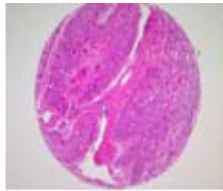
(formalin fixed)

For research use only

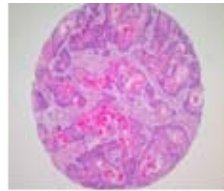
QC sheet_LOT#122120505261
Hematoxylin and Eosin staining



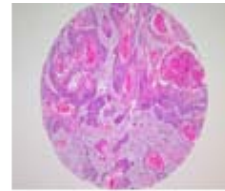
E5



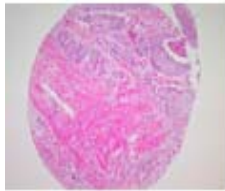
E6



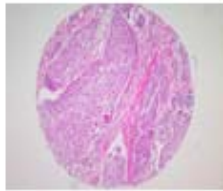
E7



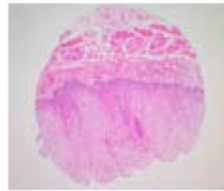
E8



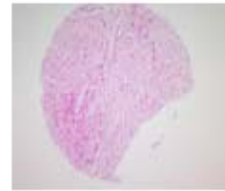
E9



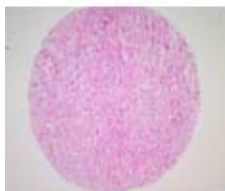
E10



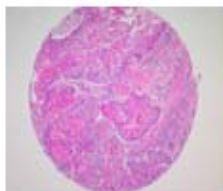
E11



F1



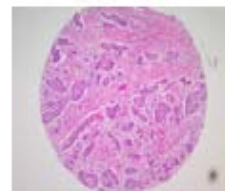
F2



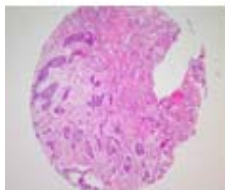
F3



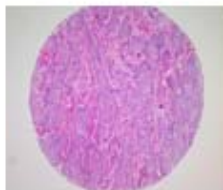
F4



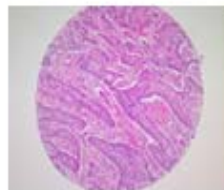
F5



F6



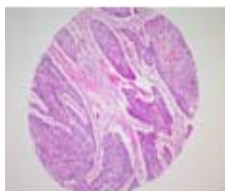
F7



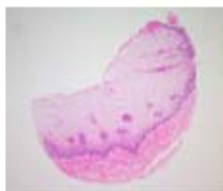
F8



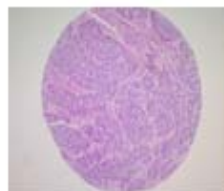
F9



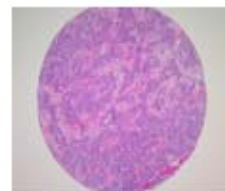
F10



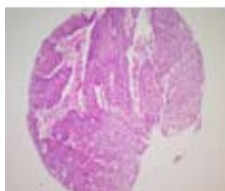
F11



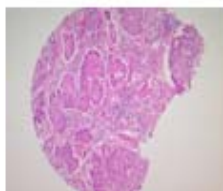
G1



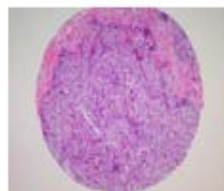
G2



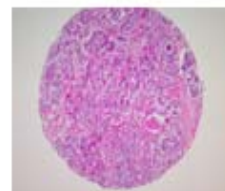
G3



G4



G5

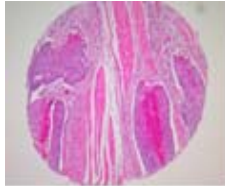


G6

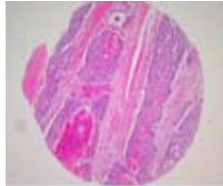
(formalin fixed)

For research use only

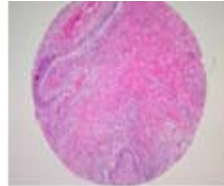
QC sheet_LOT#122120505261
Hematoxylin and Eosin staining



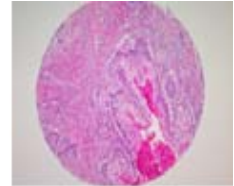
G7



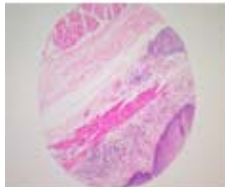
G8



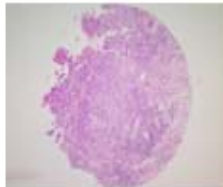
G9



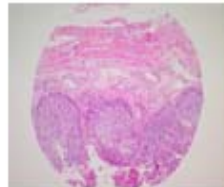
G10



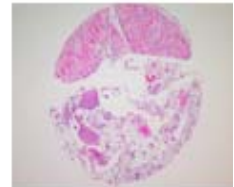
G11



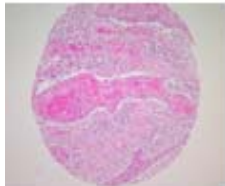
H1



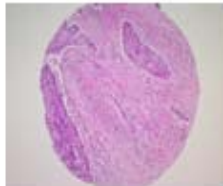
H2



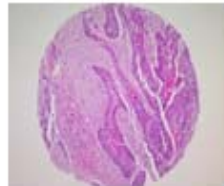
H3



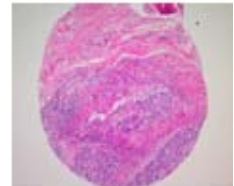
H4



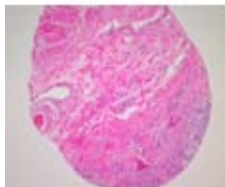
H5



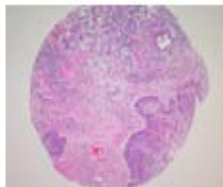
H6



H7



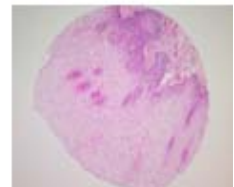
H8



H9



H10



H11

A218(III): Esophagus Cancer tissues

No	Coordinate	Sex	Age	Keyword	Histological Diagnosis	TNM
1	1,2	m	58	squamous cell carcinoma	<p>Esophagus, stomach, spleen and pancreas: Squamous cell carcinoma, well differentiated, ulceroinfiltrative, extension to subserosal fat tissue arising from esophagus.</p> <ol style="list-style-type: none"> 1) resection margin, proximal: extension of tumor 2) jejunal margin: free of tumor 3) separately submitted segment of small bowel: free of tumor 4) pancreas: free of tumor 5) spleen: free of tumor 6) regional lymph nodes, N3(1/13), N4(0/1), N8(0/2), N10(0/1), (1/17): Metastasis in 1 out of 17 nodes 7) soft tissue labelled as N1,N2: absence of node 8) pancreas and spleen labelled as N10 AND N11: ectopic pancreas, accessory spleen. 	T3N1M0 (III)
2	3,4	m	61	squamous cell carcinoma	<p>Esophagus, segmental resection:</p> <ol style="list-style-type: none"> 1) squamous cell carcinoma, well differentiated with extension to submucosa 2) benign stromal tumor, gastroesophageal junction 3) resection margin: free of tumor 4) lymph node, regional: metastatic squamous cell carcinoma in one out of 12 (paraesophageal(0/1), inferior pulmonary(0/1), subscapular(0/3), perigastric(1/7)). 	T1N1M0 (II B)
3	5,6	m	65	squamous cell carcinoma	<p>1. Esophagus, esophagectomy: fungating squamous cell carcinoma, well differentiated with focal necrosis with</p> <ol style="list-style-type: none"> 1) tumor extension to the submucosa 2) no lymphovascular permeation 3) no perineural invasion 4) adjacent squamous cell carcinoma in situ 5) resection margins, proximal and distal: free of tumor 6) regional lymph nodes, paraaortic(0/2), inferior pulmonary ligament (0/3), hilar(0/8), paraesophageal(0/2):(0/15): <ul style="list-style-type: none"> - free of tumor in all 15 lymph nodes - anthracosilicosis <p>2. Soft tissue, labelled as "paraspinal mass": myelolipoma 3. Omentum: free of tumor.</p>	T1N0M0 (I)

A218(III): Esophagus Cancer tissues

No	Coordinate	Sex	Age	Keyword	Histological Diagnosis	TNM
4	7,8	m	59	squamous cell carcinoma	Esophagus, esophagectomy: fungating squamous cell carcinoma, well differentiated, with 1) extension to the outer 1/3 of lamina propria 2) no lymphovascular permeation 3) resection margins, proximal and distal: free of tumor 4) regional lymph nodes: free of tumor(0/1).	T1N0M0 (I)
5	9,10	m	49	squamous cell carcinoma	Esophagus, esophagectomy: squamous cell carcinoma, well-differentiated, fungating type, extending into submucosa without proper muscle involvement 1) resection margins, proximal and distal: free of tumor 2) regional lymph node(0/4): free of tumor.	T1N0M0 (I)
6	11	m	61	non-neoplastic	non-neoplastic from A3,4	
7	1,2	m	74	squamous cell carcinoma	Esophagus, total gastrectomy: squamous cell carcinoma, moderately differentiated with 1) ulcerative gross type 2) extension to the adventitia 3) no lymphatic permeation 4) resection margin, proximal, distal and lateral: free of tumor 5) regional lymph nodes, LN1(0/1), LN3(0/3), LN7(0/1), paraesophageal (0/1), regional LN(1/3):(1/9): tumor metastasis in one lymph node out of 9 lymph nodes.	T3N1M0 (III)
8	3,4	m	53	squamous cell carcinoma	Esophagus, resection: 1) squamous cell carcinoma, moderately differentiated with -fungating gross type - extension to the adventitia with penetration (involving lateral resection margin) - a few lymphatic invasion 2) carcinoma in situ in the adjacent mucosa 3) resection margin, proximal: presence of carcinoma in the lymphatics 4) resection margin, distal: free of tumor 5) resection margin, lateral: extension of tumor 6) lymph nodes, subcarinal node(0/7), paraesophageal node(0/2), paratracheal node(1/1), perigastric node(0/8):(1/18): metastasis in 1 out of 18 lymph nodes 7) fibroadipose tissue labelled as distal resection margin: free of tumor.	T3N1M1 (IV)

A218(III): Esophagus Cancer tissues

No	Coordinate	Sex	Age	Keyword	Histological Diagnosis	TNM
9	B 5,6	m	53	squamous cell carcinoma	Esophagus, esophagectomy: ulcerofungating squamous cell carcinoma, moderately differentiated with 1) size: 5x3cm 2) infiltrative growth 3) penetration of proper muscle layer and extension to adventitia(T3) 4) involvement at resection margin of adventitia 5) no vascular and perineural invasions 6) intact proximal(esophagus) and distal resection margin (stomach) 7) no metastasis to paraesophageal lymph nodes(0/2).	
10	7,8	m	63	squamous cell carcinoma	Esophagus, esophagectomy: 1) squamous cell carcinoma, moderately differentiated with - fungating gross type - extension to lamina propria and submucosa - occasional lymphatic permeation 2) acanthosis glycogenosis, multiple 3) resection margin, proximal and distal: free of tumor 4) lymph node, subcarinal(0/10): free of tumor.	T1N0M0 (I)
11	9,10	m	65	squamous cell carcinoma	1. Esophagus with stomach, IVOR-Lewi's operation: 1) ulceroinfiltrative squamous cell carcinoma, moderately differentiated with - size: 3.5cm in the greatest dimension - penetration of proper muscle layer and extension to adventitia - vascular invasion - intact proximal(esophagus) and distal(stomach) resection margin - extension to basal resection margin(adventitia) 2) squamous cell carcinoma, moderately differentiated with - size: 2x1.5cm - confined to mucosa and extension to muscularis mucosa 3) regional lymph nodes: metastasis to 3 out of 15 regional lymph nodes (periesophageal (3/4), celiac(0/1), seft cardiac(1/5), peripancreatic(0/1), subcarinal(0/6), hilar(0/2)) 2. Stomach: consistent with Helicobacter pylori gastritis with focal intestinal metaplasia.	
12	11	m	67	non-neoplastic	non-neoplastic from E5,6	

A218(III): Esophagus Cancer tissues

No	Coordinate	Sex	Age	Keyword	Histological Diagnosis	TNM
13	1,2	m	67	squamous cell carcinoma	<p>1. Esophagus with stomach, esophagogastrectomy: moderately differentiated squamous cell carcinoma, with extension to the adventitia and multiple foci of carcinoma in situ</p> <ol style="list-style-type: none"> 1) resection margins, proximal: free of tumor 2) resection margins, distal: free of tumor 3) lymph nodes, regional(1/22): metastatic carcinoma 1 out of 22 lymph nodes <p>2. Adrenal gland, adrenalectomy: nodular hyperplasia</p> <p>3. Spleen, splenectomy: free of tumor</p>	T3N1M0 (III)
14	3,4	m	59	squamous cell carcinoma	<p>Esophagus, esophagectomy: squamous cell carcinoma, moderately differentiated, fungating type with extension to adventitia(very close to the lateral surgical margin)</p> <ol style="list-style-type: none"> 1) resection margin, proximal: focal squamous cell carcinoma in situ 2) resection margin, distal: free of tumor 3) regional lymph nodes, upper mediastinal(0/5), lower paratracheal (0/4), subcarinal(0/4), omental(0/10):(0/23): free of tumor in all 23 lymph nodes. 	T4N0M0 (III)
15	5,6	m	53	squamous cell carcinoma	<p>Esophagus, esophagectomy:7 squamous cell carcinoma, moderately differentiated with</p> <ol style="list-style-type: none"> 1) ulcerative gross type 2) extension to the adventitia 3) no lymphovascular invasion 4) foreign body reaction to keratinous material and abscess formation around tumor 5) resection margin, proximal and distal: free of tumor 6) lymph nodes, esophageal(0/3), hilar(0/1), subcrainal(0/6), No.7(3/6), paratracheal(0/1):(3/21): metastatic carcinoma in 3 out of 21 lymph nodes. 	T2N1M0 (II B)

A218(III): Esophagus Cancer tissues

No	Coordinate	Sex	Age	Keyword	Histological Diagnosis	TNM
16	C 7,8	m	55	squamous cell carcinoma	Esophagus, esophagectomy: squamous cell carcinoma, moderately differentiated with 1) ulcerative gross type 2) extension to the adventitia 3) no lymphovascular invasion 4) foreign body reaction to keratinous material and abscess formation around tumor 5) resection margin, proximal and distal: free of tumor 6) lymph nodes, esophageal(0/3), hilar(0/1), subcrainal(0/6), No.7(3/6), paratracheal(0/1):(3/21): metastatic carcinoma in 3 out of 21 lymph nodes Note: The tumor is so close to deep resection margin(less than 1mm) and shows significant vascular invasion.	T2N1M1 (IV)
17	9,10	m	72	squamous cell carcinoma	1. Esophagus, total esophagectomy: squamous cell carcinoma, moderately differentiated, with 1) ulceroinfiltrative gross type. 2) extension to adventitia. 3) occasional lymphatic permeation. 4) presence of squamous cell carcinoma in situ in adjacent esophageal mucosa 2. Stomach, total gastrectomy: 1) adenocarcinoma, moderately differentiated - ulceroinfiltrative gross type - mixed with signet ring cell carcinoma - with focal areas of extracellular mucin production -with extension to proper muscle layer 2) two tubular adenomas with low grade dysplasia 3) esophagus, proximal resection margin: focal dysplasia 4) duodenum, distal resection margin: free of tumor 5) regional lymph nodes, No.1(1/5), No.2(0/1), mediastinal(0/2):(1/8): metastatic squamous cell carcinoma in one out of 8 lymph nodes 6) regional lymph node, No.3(1/8), No.4(0/0), No.5(1/1), No.6(5/6), No.7(0/3), No.9(0/8):(7/26): metastatic adenocarcinoma in 7 out of 26 lymph nodes 3. Appendix, appendectomy: no pathological diagnosis.	T3N1M0 (III)
18	11	m	68	non-neoplastic	non-neoplastic from D9,10	

A218(III): Esophagus Cancer tissues

No	Coordinate	Sex	Age	Keyword	Histological Diagnosis	TNM
19	1,2	f	62	squamous cell carcinoma	Esophagus, esophagectomy: infiltrative squamous cell carcinoma, moderately differentiated, with 1) size: 4cm in the greatest diameter. 2) diffuse growth. 3) penetration of muscle layer and extension into adventitia. 4) perineural invasion. 5) intact resection margins(proximal and distal(stomach)). <Additional report > Lymph node, paraesophageal(0/1): free from tumor extension.	T3N0M0 (II A)
20	3,4	f	56	squamous cell carcinoma	Esophagus, esophagectomy: squamous cell carcinoma, moderately differentiated with extension to the proper muscle 1) resection margins, proximal and distal: free of tumor 2) lymph node, regional(0/1): free of tumor.	T2N0M0 (II A)
21	5,6	m	66	squamous cell carcinoma	Esophagus, esophagectomy: squamous cell carcinoma, moderately differentiated with extension to muscularis propria and occasional lymphatic permeation 1) resection margins, proximal and distal: free of tumor 2) regional lymph nodes, No.1(0/2), No.2(0/4):(0/6): free of tumor.	T2N0M0 (II A)
22	7,8	m	76	squamous cell carcinoma	Esophagus, esophagectomy: 1) squamous cell carcinoma, moderately differentiated with extension through proper muscle to the adventitia(T3 2) leiomyoma, small 3) resection margins, proximal and distal: free of tumor 4) lymph nodes, paraesophageal(0/6) and regional(0/1):(0/7): free of tumor.	T3N0M0 (II A)

D

A218(III): Esophagus Cancer tissues

No	Coordinate	Sex	Age	Keyword	Histological Diagnosis	TNM
23	9,10	m	68	squamous cell carcinoma	Esophagus, esophagectomy: polypoid squamous cell carcinoma, moderately differentiated with 1) size: 3.5x2.3x1.4cm 2) infiltrative growth 3) extension to inner muscle layer 4) frequent lymphovascular invasion 5) intramucosal metastasis 6) intact proximal(esophagus) and distal(stomach) resection margins 7) metastasis to regional lymph nodes(6/14:periesophageal(3/4), and celiac(3/10)).	T2N1M0 (II B)
24	11	m	49	non-neoplastic	non-neoplastic A9,10	
25	1,2	m	60	squamous cell carcinoma	Esophagus, lower, esophagectomy: 1) Ulcerative squamous cell carcinoma, moderately differentiated, with - extension to the periesophageal fat tissue - lateral margin: free of tumor - lymphovascular permeation: positive 2) resection margin, proximal, esophageal: free of tumor 3) resection margin, distal, gastric: free of tumor 4) regional lymph nodes: tumor metastasis to 3 out of 10(3/10), in detail, gastric node(0/1), paraesophageal(0/6), celiac(3/3).	T3N0M1a (IVA)
26	3,4	m	55	squamous cell carcinoma	1. Esophagus, segmental resection: superficial squamous cell carcinoma, moderately differentiated with 1) size: 3.0x3.0cm approximately 2) superficial spreading growth with focal invasion to submucosal space 3) vascular invasion 4) intact proximal(esophagus) and distal(stomach) resection margins 5) metastasis to 1 out of 14 celiac lymph nodes 2. Stomach: Consistent with Helicobacter pylori gastritis with multifocal atrophy with intestinal metaplasia.	T1N0M1a (IVA)

A218(III): Esophagus Cancer tissues

No	Coordinate	Sex	Age	Keyword	Histological Diagnosis	TNM
27	5,6 E	m	67	squamous cell carcinoma	<p>Esophagus and stomach, Sweet's operation:</p> <ol style="list-style-type: none"> 1) squamous cell carcinoma, moderately differentiated, <ul style="list-style-type: none"> - arising from the gastroesophageal junction and extension to the esophagus and cardia of stomach - fungating type - size: 5.5x4.5cm - extension to the subadventitial and subserosal soft tissue (T2, no adventitia involvement) - scant lymphovascular permeation 2) separate mass of esophagus: Squamous cell carcinoma, confined the mucosa and muscularis mucosa 3) section margins, proximal and distal: free of tumor 4) regional lymph nodes: Free of tumor in all nodes (0/30), in detail, celiac(0/2), left cardiac(0/11), greater curvature(0/0), #1(0/14), #2(0/3). 	T2N0M0 (II A)
28	7,8	m	61	squamous cell carcinoma	<p>Esophagus, esophagectomy:</p> <ol style="list-style-type: none"> 1) esophagus: Ulcerofungating squamous cell carcinoma, moderately differentiated, <ul style="list-style-type: none"> - extension to the serosa (adventitia), not exposed to the mediastinum - size: 7x2.7cm - lymphovascular permeation: positive 2) resection margin, proximal, esophageal: free of tumor 3) resection margin, distal, gastric: free of tumor 4) regional lymph nodes: tumor metastasis to 2 out of 32(2/32), in detail, paraesophageal(0/3), celiac(0/1), hilar(0/2), regional (2/26). 	T3N1M0 (III)

A218(III): Esophagus Cancer tissues

No	Coordinate	Sex	Age	Keyword	Histological Diagnosis	TNM
29	9,10	m	60	squamous cell carcinoma	<p>Esophagus, esophagectomy: squamous cell carcinoma, moderately differentiated, probably recurred, see note with</p> <ol style="list-style-type: none"> 1) size: 2.5x2cm 2) infiltrative growth 3) transmural involvement from mucosa to subserosal space 4) intact proximal and distal(stomach) resection margins but very close to deep margin. 5) metastasis to 2 out of 33 regional lymph nodes (paraesophageal(0/6), right hilar(0/5), greater curvature(0/1), celiac(2/7), AP window(0/5), regional(0/9)) 6) chronic granulomatous inflammation with necrosis, consistent with tuberculosis, in paraesophageal and AP window lymph nodes <p>Note: The tumor was predominantly located in submucosal space without evidence of tumor occurring from the mucosa. Therefore, it could be recurred tumor of laryngeal carcinoma rather than primary esophageal carcinoma.</p>	T4N0M0 (III)
30	11	m	53	non-neoplastic	non-neoplastic from C5,6	
31	1,2	m	71	squamous cell carcinoma	<p>Esophagus, esophagectomy: ulcerofungating squamous cell carcinoma, moderately differentiated, with</p> <ol style="list-style-type: none"> 1) size: 8x3cm 2) infiltrative growth 3) extension to 2/3 of submucosal space 4) no vascular and perineural invasion 5) intact proximal and distal resection margins 6) no metastasis to regional lymph nodes (celiac(0/2), periesophageal(0/7)) 7) gastrointestinal stromal tumor, benign, in upper body of stomach. 	T1N0M0 (I)
32	3,4	m	61	squamous cell carcinoma	<p>Esophagus, segmental resection: 1) squamous cell carcinoma, moderately differentiated, ulceroinfiltrative type, with extension into submucosa, with clean surgical margin. 2) stomach, biopsy: free of tumor 3) esophagus, separately submitted: free of tumor 4) lymph nodes, dissection: paraesophageal(0/1), celiac(0/2), lower paraesophageal(0/1), perigastric(0/3):(0/7): free of tumor.</p>	T1N0M0 (I)

A218(III): Esophagus Cancer tissues

No	Coordinate	Sex	Age	Keyword	Histological Diagnosis	TNM
33	5,6 F	m	62	squamous cell carcinoma	Esophagus, Sweet operation: 1) ulcerofungating squamous cell carcinoma, moderately differentiated - size:4x3.5cm - extension to the submucosa - lymphovascular permeation: unceratin 2) resection margin, proximal, esophageal: free of tumor resection margin, distal, gastric: free of tumor 3) regional lymph nodes: Tumor metastasis to 1 out of 3(1/3), in detail, celiac node(0/2), lower paraesophageal node(1/1).	T1N1M0 (II B)
34	7,8	m	62	squamous cell carcinoma	Esophagus, resection: 1) fungating squamous cell carcinoma, moderately differentiated, - size: 7x4.7cm - extension to the subserosa(no serosa involved) - lymphovascular permeation, present 2) separate mass: leiomyoma, submucosal 3) resection margin, proximal, esophageal: free of tumor 4) rResection margin, distal, gastric: free of tumor 5) regional lymph nodes: tumor metastasis to 2 out of 12 lymph nodes in detail, celiac(0/4), paraesophageal(1/3), regional (1/5).	T3N1M0 (III)
35	9,10	m	67	squamous cell carcinoma	1. Esophagus, esophagectomy: squamous cell carcinoma, moderately differentiated, with extension through proper muscle to the adventitia(T3) 1) resection margins, proximal and distal: free of tumor 2) lymph nodes, left hilar(0/3), left cardinal(2/4), subcarinal(0/18), left lower paratracheal(0/5), hilar(0/3) and regional(0/2):(2/35): - metastatic squamous cell carcinoma in 2 out of 35 lymph nodes - chronic granulomatous inflammation with necrosis in left lower paratracheal, most likely tuberculosis 2. Soft tissue, labelled as paraesophageal: free of tumor.	
36	11	f	62	non-neoplastic	non-neoplastic from D1,2	

A218(III): Esophagus Cancer tissues

No	Coordinate	Sex	Age	Keyword	Histological Diagnosis	TNM
37	1,2	m	66	squamous cell carcinoma	Esophagus and lymph node, esophagectomy with lymph node dissection: 1) Ulcerofungating squamous cell carcinoma, poorly differentiated, with - extension to the adventitia(not exposed to the mediastinum) - size: 3.1x2cm - lymphovascular permeation: scant 2) resection margin, proximal, esophageal: free of tumor 3) resection margin, distal, stomach: free of tumor 4) regional lymph nodes: Tumor metastasis to 2 out of 3(2/3), in detail, lower paraesophageal(0/1), celiac(2/2).	T3N0M1a (IVA)
38	3,4	m	57	squamous cell carcinoma	Esophagus and cardia of stomach, esophagectomy and node dissection: 1) ulcerative squamous cell carcinoma, poorly differentiated, - size: 3.3x1cm - extension to the outer muscle layer - lymphovascular permeation: Positive 2) resection margins, proximal and distal: free of tumor 3) regional lymph nodes: free of tumor in all nodes(0/24), in detail, subcarinal(0/10), hilar(0/2), pretracheal(0/6), lower paratracheal(0/3), left paracardial(0/2), 8L(0/1), omental mass(free of tumor).	
39	G 5,6	m	56	squamous cell carcinoma	Esophagus, esophagectomy: squamous cell carcinoma, poorly differentiated with extension to the adventitia(T3) 1) resection margins, proximal and distal: free of tumor 2) lymph nodes, labelled as greater curvature(0/1), paraesophageal(0/3), IPL(1/9) and regional(0/15):(1/28): metastatic carcinoma in 1 out of 28 lymph nodes 3) Immunohistochemical staining results: NSE, Synaptophysin, Chromogranin, CD56: Negative.	T3N1M0 (III)

A218(III): Esophagus Cancer tissues

No	Coordinate	Sex	Age	Keyword	Histological Diagnosis	TNM
40	7,8	m	67	squamous cell carcinoma	Esophagus, Ivor Lewis operation: squamous cell carcinoma, poorly differentiated 1) ulceroinfiltrative type 2) extending through muscle layer and focally extending to adventitia 3) occasional lymphatic permeation 4) resection margin, proximal: presence of squamous cell carcinoma in situ within 1mm away from the margin 5) resection margin, distal: free of tumor 6) regional lymph nodes, periesophageal(1/14): tumor metastasis in 1 out of 14 nodes 7) regional lymph nodes, separately submitted, peripancreatic(0/1), common hepatic(0/2), subcarinal(0/5), left paracardial(2/4), celiac(0/4), lesser curvature(0/4): (0/20): tumor metastasis in 2 out of 20 nodes.	
41	9,10	f	70	squamous cell carcinoma	Esophagus, E-G stomy: 1) squamous cell carcinoma, moderately differentiated, ulcerative type, extension to the adventitia 2) resection margin, proximal and distal: free of tumor.	
42	11	m	70	non-neoplastic	non-neoplastic from H5,6	
43	1,2	m	61	squamous cell carcinoma	Esophagus, total esophagectomy: moderately well differentiated squamous cell carcinoma, predominantly confined to the lamina propria, with focal invasion into the muscularis mucosae, without involvement of the submucosa, muscularis propria, regional lymphnodes or surgical margins.	T1N0M1 (IV)

A218(III): Esophagus Cancer tissues

No	Coordinate	Sex	Age	Keyword	Histological Diagnosis	TNM
44	3,4	m	64	squamous cell carcinoma	<p>Esophagus and stomach, esophagectomy and gastrectomy: moderately/well differentiated squamous cell carcinoma with full thickness involvement of the esophageal wall, see note</p> <ol style="list-style-type: none"> 1) regional lymph nodes, N1(0/3), N2(1/3):(1/6): metastatic squamous cell carcinoma in a lymph node, with extranodal extension, out of six lymph nodes 2) lymph nodes, labelled as "inferior pulmonary ligamental"(0/1) and labelled as "paratracheal"(0/5): pneumoconiotic nodules without involvement of tumor 3) resection margins, proximal(esophagus): free of tumor 4) resection margins, distal(jejunum): free of tumor 5) specimen, labelled as "mediastinal pleural nodule": metastatic squamous cell carcinoma a lymph node with extranodal extension <p>Note: The stomach and the gastrojejunostomy site do not show any residual neoplasm.</p>	T3N1M0 (III)
45	H 5,6	m	70	squamous cell carcinoma	<p>Esophagus, esophagectomy:</p> <ol style="list-style-type: none"> 1) invasive squamous cell carcinoma, moderately to poorly differentiated, ulcerative, with penetration of entire wall and extension to the underlying resection margin and occasional lymphatic invasion 2) leiomyomatosis 3) resection margins, proximal and distal: free of tumor 4) lymph nodes(0/2): free of tumor metastasis in 2 nodes. 	T3N0M0 (II A)
46	7,8	m	74	squamous cell carcinoma	<ol style="list-style-type: none"> 1. Esophagus, resection: squamous cell carcinoma with focally glandular differentiation (adenosquamous carcinoma), confined to the submucosa but frequent lymphovascular permeation 1) resection margins, proximal and distal: Free of tumor. 2) regional lymph nodes, regional(1/1), No.2(0/0), No.3(0/0), No.7(0/1), No.8(0/0), No.11(0/4): metastatic squamous cell carcinoma in 1 out of 6 nodes 2. Lung, wedge resection: bullae. 	T1N1M0 (II B)

A218(III): Esophagus Cancer tissues

No	Coordinate	Sex	Age	Keyword	Histological Diagnosis	TNM
47	9,10	m	64	squamous cell carcinoma	<p>ESOPHAGUS:</p> <p>1) mass, double tumors, sarcoma, most likely malignant fibrous histiocytoma, and squamous cell carcinoma</p> <p>2) resection margin, proximal, esophageal: free of tumor</p> <p>3) resection margin, distal, G-E junction: free of tumor</p> <p>4) regional lymph nodes: free of tumor in all nodes(0/44), followings, MID paraesophageal (0/8), low paraesophageal(0/4), subcarinal (0/11), surrounding nodes</p>	
48	11	m	61	non-neoplastic	non-neoplastic from F3,4	